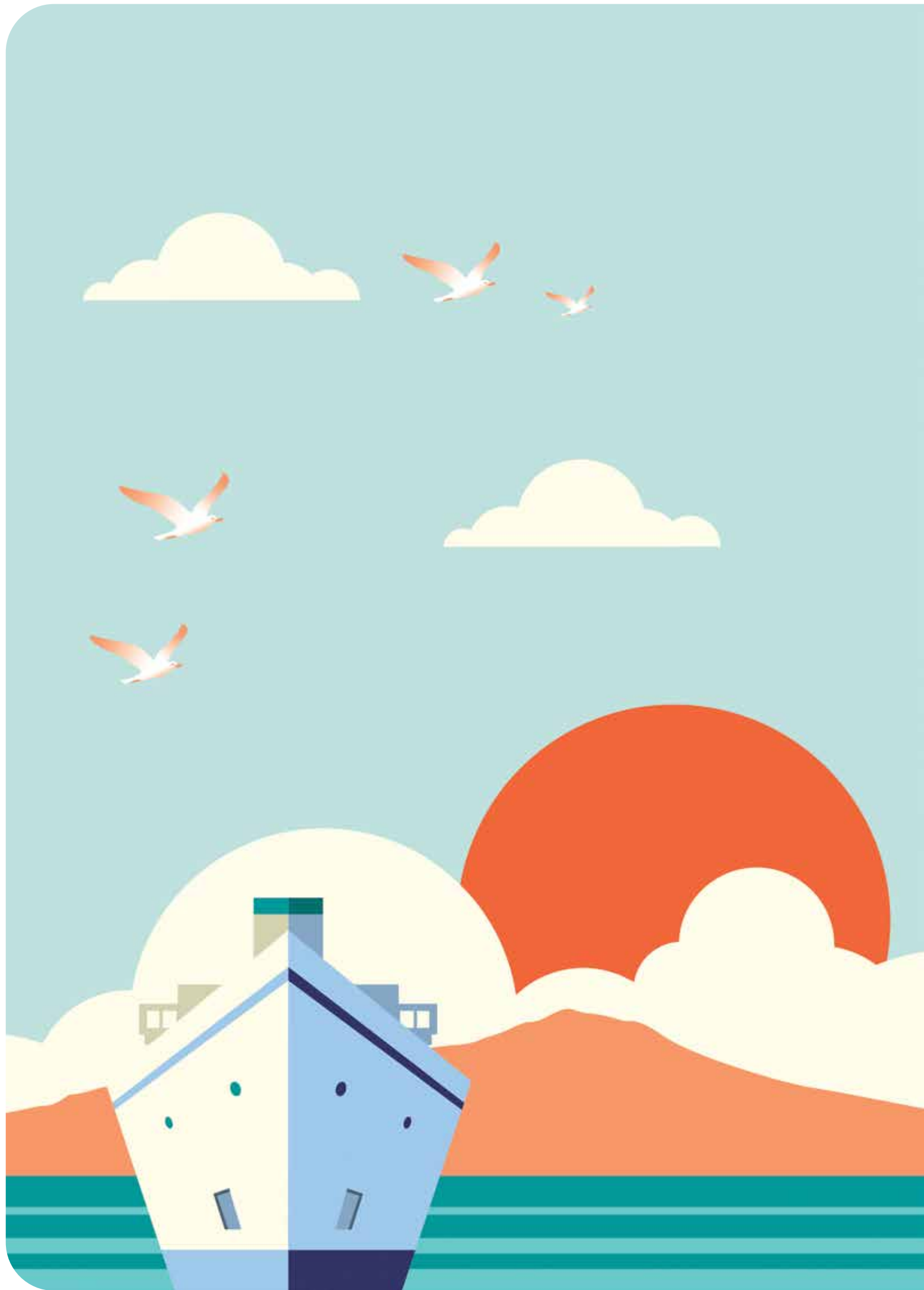


POSH

PORT OUT, STARBOARD HOME



POSH
2 0 2 0





POSH

PORT OUT, STARBOARD HOME

Saturday 21 March 2020
The Fullerton Hotel Sydney



POSH
2 0 2 0



I am delighted to welcome you to the POSH Gala Ball 2020. Cancer Council NSW is committed to saving lives and reducing the burden of cancer. Since its inception 21 years ago, POSH has made a phenomenal contribution to these goals, raising more than \$17 million for essential cancer research.

Many of you joining us tonight are long-standing members of the POSH family. Thank you for your dedication to achieving a cancer free future. To those of you who are new to the family, a very warm welcome to this unique event.

Research underpins our work across every stage of the cancer journey. It provides the foundation for prevention programs, which empower people to make healthier choices and reduce their cancer risk; information and support for people affected by cancer when they need it most; and an advocacy network that ensures governments act.

Research also brings much-needed hope to the cancer community. We are honoured to have world-leading cancer researcher Professor John Rasko AO joining us as keynote speaker tonight. Thanks to researchers like Professor Rasko, we have seen incredible improvements in cancer outcomes. With your support, we can ensure these breakthroughs continue.

I would also like to recognise the tireless efforts of our POSH committee, some who have been involved since our first event in 2000. Their hard work and dedication have made POSH unmissable!

Thank you for your generosity and ongoing support – I know you are in for a great night.

Warm regards,

Jeff Mitchell

Chief Executive Officer, Cancer Council NSW



On behalf of the entire POSH committee, thank you to everyone who has again contributed so generously to our 21st POSH gala.

I would like to warmly welcome back our dedicated, long-time supporters, and offer an equally warm welcome to the new faces here tonight.

We are all here to enjoy an evening of fun, but more importantly, we are also here to make a difference in the lives of people affected by cancer. I know it is a cause that is close to many of us.

Your enthusiastic participation in tonight's gala will help Cancer Council continue its vital programs in research, prevention, advocacy and support.

There are several ways you can get involved throughout the evening and support this great work. We have over 100 outstanding auction items and experiences available, all of which have been 100% donated. You also have the opportunity to fund a PhD researcher, and can become a Friend of POSH with a tax-deductible donation.

I would like to acknowledge the POSH committee members, who provide the strategy, focus and inspiration to ensure POSH is a not-to-be-missed event and continues to raise more than \$1 million annually for cancer research.

I would also like to thank our master of ceremonies Vince Sorrenti, and all our corporate partners, guests and sponsors. With your support, we are getting closer to a cancer free future.

Michael Morgan

Chair POSH Committee

RESEARCH OUTLINE



Professor John Rasko AO is a world-renowned gene therapy physician-scientist and practicing haematologist/pathologist who directs Cell and Molecular Therapies at Royal Prince Alfred Hospital. His research has been successful in uncovering new mechanisms of leukemia, understanding blood hormones and their mechanisms of action, and clinical trials of new biological therapies for cancer and bleeding disorders.

In 2004, he led a team that identified the gene for Hartnup Disease – a disease caused by the body's inability to absorb certain amino acids. With collaborators in the UK and USA, for two decades he has made internationally-acclaimed discoveries in treating diseases including haemophilia, thalassaemia and cancer using gene therapy.

With funding from Cancer Council NSW, Professor Rasko and his team are the first in Australia to test CAR T-cell immunotherapy in pancreatic cancer. The technique involves using a patient's own immune cells and reprogramming them to attack only cancer cells. If shown to be effective, this revolutionary new treatment will provide much-needed hope for patients who are diagnosed with pancreatic cancer.

John has received many national and international awards in recognition of his commitment to excellence in medical research, including appointment as an Officer of the Order of Australia. He serves on hospital, state and national bodies including Chair of The Gene Technology Technical Advisory Committee advising the Australian Government. In 2018 he was honoured by the Board of the Australian Broadcasting Commission as the sixtieth Boyer Lecturer speaking on the topic "Life Re-engineered".

Cancer Council is honoured to welcome Professor John Rasko as the keynote speaker at POSH 2020.

"I'm grateful to Cancer Council for their continued funding of my team's research for over a decade. I applaud the POSH community on your generous contribution to cancer research, raising \$17 million over the past 21 years."

Professor John Rasko AO
POSH Keynote Speaker 2020



21 YEARS CLOSER TO A CANCER FREE FUTURE

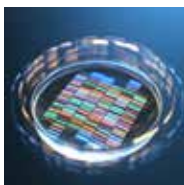
Research has brought us a long way in the last 20 years. We've collated just some of the many milestones and achievements in cancer research and control since the first POSH Gala Ball in 1999.

1999

The five-year survival rate for all cancers combined was 56.8% for men and 63.4% for women in Australia.

2003

Scientists announced they **mapped the human genome** (DNA), allowing researchers to identify the genetic defects that power cancer.



The **first targeted drug for lung cancer** was approved for use in Australia after research showed it delays the time before a patient's cancer progresses.



2007

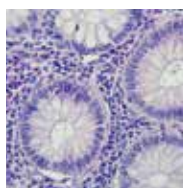
Australia became the first country in the world to roll out a free **National HPV Vaccination Program**.

Cancer Council NSW research led by A/Prof David Smith revealed **more than half of all men with prostate cancer reported some levels of unmet supportive care needs** – most commonly psychological needs and issues with changes in sexual function.



2001

The first targeted anti-breast cancer drug was made available for the treatment of late-stage breast cancer through a special program funded by the Australian Government. In 2006, it was made available for the treatment of patients with HER-2 positive early stage breast cancer.



2006

The National Bowel Cancer Screening Program was introduced in Australia.

Cancer Council NSW initiated the Aboriginal Patterns of Cancer Care Project, to explore why the death rate for Aboriginal Australians is more than three times higher than non-Aboriginal Australians.

2008

Cancer Council NSW became a major funding partner of the 45 and Up Study – the largest ongoing study of healthy aging in the Southern Hemisphere.



2009

With funding from Cancer Council NSW, Prof Anna deFazio and her team **identified two distinct mechanisms that lead to treatment failure** in the most common type of ovarian cancer. Prof deFazio has taken these findings, and those from two further Cancer Council NSW grants, to clinical practice through a new translational research program.

Cancer Council NSW research showed us that about three in every four **men treated for early stage prostate cancer experienced problems with sexual function**. Lower proportions of men expressed problems with urinary and bowel function and the levels differed by treatment type.

2010

Cancer Council NSW committed \$2.5 million to the International Cancer Genome Consortium, studying genetic changes associated with 50 different types of cancer. In a landmark effort, **Australian researchers mapped the genome of pancreatic cancer.** This work revealed valuable information about the extreme complexity of how pancreatic cancer develops, which is proving to be unique for each patient from a genetic standpoint.

2012

Prof Minoti Apte and her team discovered that the **tissue surrounding pancreatic cancers actively helps the tumour grow and spread.**

In 2013, Prof Apte received her second of three Cancer Council NSW grants to progress this work, leading to the team identifying a potential new treatment approach in 2017.



2015

With funding from Cancer Council NSW, Prof Murray Norris and his team created the 'Minimal Residual Disease' model, a tool that can **detect traces of residual cancer cells in children suffering with acute lymphoblastic leukaemia (ALL).** The test, with appropriate follow-up treatment, has halved the relapse rate in high risk children. It is now "standard of care" for children diagnosed with ALL – nationally and internationally.



2017

Underpinned by Cancer Council NSW research, the **new National Cervical Screening Program** was introduced, transitioning from two-yearly Pap tests to five-yearly HPV screening tests.

Our research found that **bowel cancer screening could save 83,800 more lives** by 2040, if just 20% more eligible people participated.



2019

Cancer Council NSW research shows **100,000 lung cancer deaths could be avoided this century** if smoking rates are reduced to 10% by 2025.

Today, the **five-year survival rate for all cancers combined is 68.1% for men and 69.9% for women** in Australia. For our two most common cancers, breast and prostate, the five-year survival rate is over 90%.



2011

Australia became the first country in the world to introduce **cigarette plain packaging legislation.** Cigarette sales are the lowest on record.

2013

Our 20-year report identified fewer cancer deaths, with an estimated **61,000 Australian lives saved** thanks to research into cancer prevention, screening and treatment.

A major collaborative project initiated by Cancer Council NSW revealed that many **Aboriginal people experience social exclusion when navigating through the health care system.** The main barriers identified were social and economic disadvantage, fear and mistrust of the health care system and a general lack of knowledge and understanding of cancer and its treatment.



2016

Prof Roger Reddel and Prof Phil Robinson launched the **world-first ProCan initiative.** This will see their team analyse tens of thousands of examples of all types of cancer from all over the world to develop a library of information to advance scientific discovery and enhance clinical treatment worldwide. Cancer Council NSW supported ProCan through the award of the inaugural Infrastructure Grant in 2018.

The **first immunotherapy for lung cancer** was approved for use in Australia after research showed it extends survival and causes fewer side effects than chemotherapy.



2018

Professor Karen Canfell and her team at Cancer Council NSW worked with the World Health Organization (WHO) and published a paper on **achieving global elimination of cervical cancer.**

Our highlights of 2018/19

Here is a snapshot of the impact of our work to date and how, together, we will continue to reduce the burden of cancer.

Everything we do is underpinned by world-class research. In the past 5 years alone, Cancer Council NSW has invested \$83.6 million into essential cancer research.

In 2018/19, we contributed \$19 million to cancer research, funding:



250
researchers



65
projects



19
institutions



Almost **10,000 new advocates** joined our CanAct Community this year, bringing the total to **40,000 members** who influence what politicians do about cancer.



REDUCING CANCER RISK

1.9 million: The number of Australian lives that will be saved through reduced lung cancer burden up to the year 2100, thanks to anti-smoking reforms driven by Cancer Council and allies*.

Thanks to our research, **300,000 deaths** from cervical cancer could be prevented globally each year.

Applying research led by Cancer Council NSW, Australia has declared its intention to become the first country in the world to **eliminate cervical cancer by 2035**.

80% of children in NSW primary schools are reducing their risk of skin cancer, thanks to our **SunSmart Schools Program**.



IMPROVING THE QUALITY OF LIFE OF PEOPLE AFFECTED BY CANCER

More than **530,000** people affected by cancer relied on us for information and support in 2018/19.

We helped **2,660** cancer patients and carers get to treatment centres and hospitals through our **Transport to Treatment** service, driving more than **1.1 million kilometres** across NSW.

We provided affordable accommodation to **2,258** cancer patients and carers, so they could stay close to their treatment centres.

2,677 people were helped through a time of financial stress thanks to our **Financial Assistance Program**.

Our **Pro Bono Program** provided an estimated **\$5.2 million** worth of legal, financial, workplace or small business assistance to people in need.



INCREASING CANCER SURVIVAL

The number of Australians who survive cancer has increased by an estimated **40% in the past 30 years***.

Most of that improvement is through prevention and early detection, with increased survival in early-stage cancers of the breast, bowel, cervix, prostate and melanoma.

Today, almost **7 in 10 people** in NSW will survive at least 5 years after a cancer diagnosis*.

84,000 Australian lives could be saved by 2040, if we can increase bowel cancer screening rates to 60% from the current rate of around 40%*.



IMPROVING CANCER OUTCOMES FOR PRIORITY POPULATIONS

Smoking rates among Aboriginal and Torres Strait Islander people in NSW have decreased by about **25% in the past five years***.

A key priority of our cervical cancer research agenda is to **reduce cervical cancer inequities** faced by Aboriginal and Torres Strait Islander people and other disadvantaged groups in Australia.

*These figures reflect the work of both Cancer Council and others.

'Cancer Council' refers to the work of the Cancer Council Federation, not only Cancer Council NSW.

21 YEARS OF INSPIRING TALKS

Over the last two decades, we've had the privilege of hearing some of the leading cancer researchers in Australia share updates on the very latest advances in their fields of expertise.



Dr Andrew Penman AM has undoubtedly saved the lives of thousands of Australians by reframing cancer as a social issue not just a medical one. As CEO of Cancer Council NSW from 1998 to 2012, Andrew pushed the public health focus to reach larger numbers of people by targeting their working and leisure environments. Under Andrew's stewardship, Cancer Council NSW increased its investment in research, establishing ongoing partnerships with the best researchers in the field. His work in cancer control was recognised by his appointment as a Member in the Order of Australia (AM) in 2010.

Dr Andrew Penman AM
keynote speaker 2000–2005



Professor Robyn Ward AM is Executive Dean of the new Faculty of Medicine and Health at The University of Sydney. Throughout her career Robyn has shown a sustained capacity for innovative research into the range of issues that underlie cancer. In particular, she has made several important contributions to translational cancer research in bowel cancer. In 2013, Robyn was awarded the Member of the Order of Australia (AM) for significant service to medical research and patient care in the field of oncology.

Professor Robyn Ward AM
keynote speaker in 2005, 2007 and 2013



Professor Charlie Teo is a world-renowned neurosurgeon and brain cancer researcher working primarily at the Prince of Wales Hospital Sydney. Charlie established the internationally acclaimed Centre for Minimally Invasive Neurosurgery, for which he was awarded the Member of the Order of Australia (AM) in 2011. His work has extended the lives of many children and adults with brain tumours, some of which were previously considered to be inoperable.

Professor Charlie Teo AM
keynote speaker in 2008



Professor Ian Frazer AC is recognised as co-inventor of the technology enabling the HPV vaccines, currently used worldwide to help prevent cervical cancer. He continues to lead work on new vaccine technologies. Ian was recognised as Australian of the Year in 2006 and was appointed Companion of the Order of Australia (AC) in 2012. Most recently, Ian was appointed chair of the federal government's Medical Research Future Fund.

Professor Ian Frazer AC
keynote speaker in 2009, 2015 and 2019



Dr Graham Colditz is an internationally recognised leader in cancer prevention research and Deputy Director of the Institute of Public Health at Washington University in St. Louis. As an epidemiologist and public health expert, Graham has received numerous awards including the 2011 Medal of Honour (American Cancer Society's highest honour) and the 2014 Award for Outstanding Achievement in Cancer Prevention Research.

Dr Graham Colditz
keynote speaker in 2010





Professor Roger Reddel is Director of the Children's Medical Research Institute (CMRI) and Head of its Cancer Research Unit. In 2016, Roger, with Professor Phil Robinson, established a new world-leading research project and facility called ProCan. Over the next 5-7 years, ProCan is analysing 70,000 samples of all types of cancer from all over the world to build a database of information to advance scientific discovery and enhance clinical treatment worldwide.

Professor Roger Reddel

keynote speaker in 2011 and 2017



Professor Murray Norris AM is Deputy Director of Children's Cancer Institute and Head of the Molecular Diagnostics Program. In 2016, the Children's Cancer Institute and Sydney Children's Hospitals Network launched the Zero Childhood Cancer program – the most ambitious and comprehensive child cancer research program ever undertaken in Australia. In 2015, Murray was appointed a Member of the Order of Australia (AM) for significant service to medical research as a molecular biologist and for pioneering developments of treatment for cancer in children.

Professor Murray Norris AM

keynote speaker in 2012



Associate Professor David Smith is a Senior Research Fellow who leads Cancer Council NSW research group for prostate cancer. He is an epidemiologist and health services researcher with specific expertise in issues related to the causes of prostate cancer, the effects of early detection and screening, patterns of care for prostate cancer and improving the quality of life of men living with prostate cancer.

Associate Professor David Smith

keynote speaker in 2014



Professor Karen Canfell is Director of the Cancer Research Division at Cancer Council NSW. Over the last 15 years, her research has had a major impact on cervical cancer prevention policy decisions in Australia, New Zealand and the UK. Karen's work in this area has been recognised by the World Health Organization (WHO), which approached her to be a key member of a groundbreaking technical group on global cervical cancer elimination. In 2017, Karen established a new research strategy for Cancer Council NSW called *Pathways to a cancer free future*. Karen was named one of Australia's top 100 Women of Influence in 2015.

Professor Karen Canfell

keynote speaker in 2016



Professor Anna deFazio heads the Gynaecological Oncology Research Laboratory at the Centre for Cancer Research, the Westmead Institute for Medical Research. The focus of Anna's research is to understand the clinical and genetic factors that influence response and resistance to chemotherapy in ovarian cancer. In 2017, Anna established a major new study to develop strategies to better define ovarian cancer patient subsets, in an effort to optimise the selection of patients for novel molecularly-targeted clinical trials and ultimately to individualise treatment.

Professor Anna deFazio

keynote speaker in 2018



Dr Michelle McDonald leads the Bone Microenvironment Group at the Garvan Institute of Medical Research. She is a post-doctoral scientist looking to improve strategies for treating bone diseases associated with multiple myeloma and breast and prostate cancers. Over the next few years Michelle's research is focussing on uncovering what activates dormant myeloma cells and causes cancer to grow in the bone and testing if drugs used for other bone diseases can trigger myeloma cells to go back into hibernation.

Dr Michelle McDonald

keynote speaker in 2019

POSH COMMITTEE



Everyone committed to POSH is united by a common goal: to beat cancer.

The success POSH enjoys today, as we celebrate our 21st year, is mainly attributed to the many people who give so generously their time, energy and effort.

Our thanks are extended to the POSH committee members, many of whom have been on the POSH committee since its inception. They provide the strategy, focus and inspiration to ensure POSH is a not-to-be-missed event and continues to raise more than \$1 million annually for cancer research.

To the many volunteers whose efforts, whether large or small, are invaluable to our cause, we thank you for your contributions.

Finally, we gratefully acknowledge Vince Sorrenti, POSH Master of Ceremonies and entertainer, who has made an outstanding personal commitment by donating his services for the past 21 years. He continues to delight and engage our patrons, and we are very grateful for his support, humour and tenacity.

Cancer Council gratefully acknowledges the generosity and commitment of the POSH committee and the POSH volunteers.

POSH COMMITTEE

Michael Morgan, Chair
Libby Boyce
Bill Drakopoulos
Luke Fussell
Gary Gerstle
Bruce Hodgkinson AM SC
Nadine O'Brien
Clare Paspaley
Stephen Roberts
Kelly Ross
Brad Sweeny
Phillip Tarrant
James Tuite
John White
John Ryder Winning
John Winning
Jeff Mitchell, Ex-officio

POSH VOLUNTEERS

Jane Bennett
Dallas Lesley

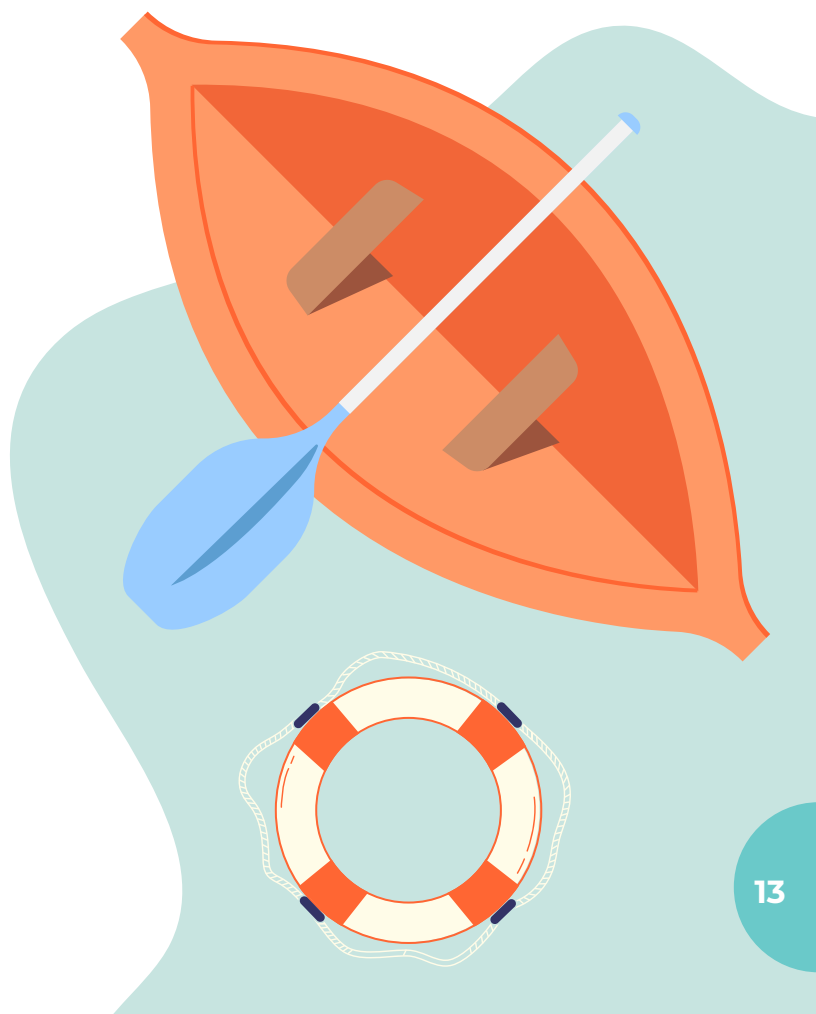
POSH STAFF

Jenny Menzies
Vicky Fong

POSH SPONSORS

MAJOR SPONSORS

Cancer Council NSW acknowledges the generous support of the POSH sponsors and suppliers.



FRIENDS



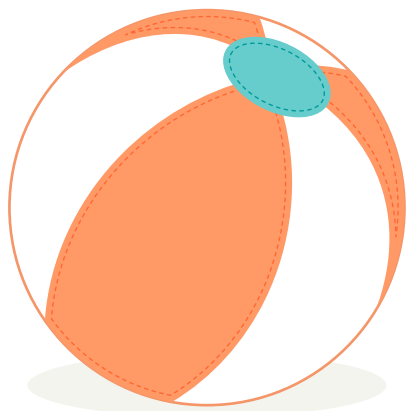
"In the last five years alone, Cancer Council NSW has contributed \$83.6 million to essential cancer research. This is only possible thanks to the generosity of our supporters.

Please consider joining our Friends of POSH by making a tax-deductible donation to cancer research. You can specify the area of cancer research where you wish your donation to be directed.

Thank you for your generous support."

Jeff Mitchell

Chief Executive Officer
Cancer Council NSW



Cancer Council research grants recipients 2019

Guests at POSH 2020 have the opportunity to become Friends of Cancer Council by making a tax-deductible donation to cancer research. Friends of Cancer Council can contribute in the following categories: Titanium \$50,000, Diamond \$20,000, Platinum \$10,000, Gold \$5,000, Silver \$2,500 and Bronze \$1,000.

If you wish, you may specify the area where you would like your donation to be directed. Choose from the following suggested areas of cancer research for men, women and children:

- Bowel
- Brain
- Breast
- Childhood cancer
- Leukaemia and Lymphoma
- Liver
- Ovarian
- Pancreatic
- Prostate
- Skin
- Wherever the need is deemed greatest.

For further information on becoming a Friend of Cancer Council, please see the staff on the night or contact Jenny Menzies at Cancer Council NSW on 9334 1967 or jennym@nswcc.org.au



THANK YOU TO OUR FRIENDS FROM POSH 2019

TITANIUM

Fussell Family Foundation Pty Ltd
Keith and Alison Ross
Max Schroder

DIAMOND

Julie Hannaford
Jeff and Yvette Mitchell
Jennifer Pridham
Jim and Fran Sweeny
Sydney Restaurant Group

PLATINUM

Bennett Family Foundation
Michele Brooks and Andrew Michael
Michael Daniels
Max Denton
Richard and Jan Freemantle
Peter and Fiona Langham
Michael and Maryrose Morgan
Adrian O'Connor
George and Christine Penklis
Stephen Roberts and Christina Boyce

GOLD

Grant and Zoe Cameron
Remon Fayad
Daniel and Melinda Flynn
Jill Hawker
Andrew Lockhart
Charles and Glen Loxton
Josephine and Damien O'Brien
Jane O'Connor
Dianne Scheiber

John and Maureen Sidoti
Tracey Steggall
Bianca and John White
Terry Willis and Susie Bottger-Willis

SILVER

Nicholas Blake and Carolyn Quayle
Geoff and Dawn Connellan
Phil and Robyn De Gail
Peter Hanscomb and Fiona Biondi
Cathryn and James Hodgkinson
Mark and Anne Lazberger
Paspaley Pearls Pty Ltd
Kelly Ross
Alister and Kayle Woods

BRONZE

Andrew and Mary Beatty
Simon and Katrina Bird
Jocelyn Brown
Paul and Sue Cobden
Tony and Rosie Crawford
Jonathan and Tanzim Griffiths
Joetat Pty Ltd
Fleur Jouault
Omar Kasadi
Mark Matehaere
Ian and Karen Morante
Tony and Jenny Muston
Anne Marie Press
Louise and Timothy Ryan
Michael and Jenny Traill

Our sincere thanks to our Friends who
wished not to be acknowledged.

CORPORATE PARTNERS

Cancer Council NSW acknowledges the generous support of the POSH Corporate Partners.



BRUCE HODGKINSON AM SC







AUCTION

**Thank you to all of our
sponsors. Every auction
item and experience is
100% donated.**

FUND RESEARCH AND HELP SAVE LIVES



1. SUPPORT THE NEXT GENERATION OF CANCER RESEARCHERS

Cancer Council is an independent charity, and the only organisation that works across every area of every cancer: research, prevention, support and advocacy. Cancer Council NSW is dedicated to conducting and funding world-class research. Professor Karen Canfell is the Director of the Cancer Research Division and is a world recognised expert in cancer control. Professor Canfell leads a world-class team of researchers, PhD students, modellers and programmers who are focused on reducing the impact of cervical, breast, lung, bowel, prostate and ovarian cancers and cancers related to Lynch-syndrome.

Cancer Council NSW offers the POSH guests the exciting opportunity to help fund the work of our PhD students – who represent the next generation researchers. The researchers work with Professor Karen Canfell and her team across a range of projects with the aim of reducing the burden of cancer in Australia. There is an opportunity to support a new PhD student in our Gastrointestinal Group to investigate ways we can prevent bowel cancer and find it at an early stage. If caught early, bowel cancer can be successfully treated in more than 90% of cases. However, in Australia bowel cancer remains second most common cause of cancer death after lung cancer.

By supporting this PhD position, you will have the opportunity to:

- Meet the research student and their research supervisor for a briefing and update
- Be part of the coordinated effort to save more lives.

All donations are tax deductible

Value: \$5,000 will help fund a PhD student and their project





2. IMPROVE A CANCER PATIENT'S QUALITY OF LIFE

Cancer Council NSW provides a huge array of information and support services for NSW cancer patients and carers. However, based on our research, it is clear that people often don't know what services are available or where to look when they need more information, emotional support or help with practical things like their finances.

Based on-site at major cancer treatment centres, the new Cancer Council Liaison position aims to improve awareness of, and access to, cancer information and support services for people diagnosed with cancer and their family and carers. We want to ensure people are connected to the right services, in the right place, at the right time. Our Liaisons complement the work of health care professionals, providing people living with cancer and their carers with emotional support, evidence-based information and referral to Cancer Council NSW and other community support services.

Cancer Council NSW offers POSH guests the opportunity to assist with funding for the Liaisons program and contribute to better patient access to cancer information and support across the state. Your support would mean more health professionals like Kate Pallot, who is our Liaison at Albury Wodonga Regional Cancer Centre, are able to directly help cancer patients find the support they need, when they need it most.

By supporting the Liaisons program, you will have the opportunity to:

- **Meet a Cancer Council NSW Liaison and see how they operate from day to day**
- **Directly contribute to better support for cancer patients in NSW.**

**This item is tax deductible*

Value: \$5,000 will fund a Cancer Council Liaison Officer at a major cancer treatment centre



3. ACCOMMODATION HARDSHIP PROGRAM

Cancer patients living in regional and rural communities may need to travel long distances to receive their cancer treatment. Financial worries and stress are common for people diagnosed with cancer and their carers. Last financial year we provided 1,544 room nights of accommodation for people in financial hardship and the demand is increasing. With your help Cancer Council can support more people to access accommodation. **This item is tax deductible*

Value: \$600 can provide 5 nights of accommodation for patients travelling away from home for their treatment



4. COUNSELLING SUPPORT PROGRAM

A cancer diagnosis is a major stressor in a person's life and is associated with significant emotional distress for people diagnosed with cancer and their family, friends and carers. The Cancer Counselling program provides counselling from accredited counsellors who specialise in cancer support. People accessing the program have reported that they felt the counsellor understood how cancer affected their lives, reducing their level of anxiety and depression; and that the subsidised sessions relieved financial burden. **This item is tax deductible*

Value: \$600 can help someone access six specialised cancer counselling sessions to manage their distress and reduce anxiety



5. FINANCIAL ASSISTANCE SERVICES

People diagnosed with cancer and their carers can face financial stress due to loss of income and medical expenses. Emergency financial assistance is provided to eligible patients experiencing financial hardship. Patients can receive \$350 in total for food, fuel and unpaid utility bills. Our Home Help Payment Assistance Service provides an additional \$350 to assist with house cleaning and gardening maintenance. This assistance alleviates financial burden and improves patients' wellbeing. **This item is tax deductible*

Value: \$700 can help someone to access emergency financial assistance and home help





6. PASPALEY \$12,000 GIFT CERTIFICATE & PEARL DISCOVERY EXPERIENCE

Paspaley pearls are naturally beautiful. Created by nature in Australia's pristine northern oceans, these exceptional gems are the rarest and most valuable in the world. As pearling pioneers, Paspaley has dedicated over 80 years to the perfect pearl.

With a sophisticated fleet of purpose-built ships, they are one of the few companies still diving for wild pearl oysters. Paspaley's innovative techniques have been widely acknowledged as world's best practice, positioning the company at the forefront of the pearling industry.

In addition to your \$12,000 Paspaley Gift Certificate, join us with four friends for an exclusive Paspaley Pearl Discovery Experience.

Explore the Paspaley signature collections at Paspaley.com

- **\$12,000 Paspaley gift certificate including an exclusive Paspaley Pearl Discovery experience for four guests at your nearest boutique.**

Value: \$12,000

PASPALEY
THE MOST BEAUTIFUL PEARLS IN THE WORLD



7. BORGO SANTANDREA, AMALFI COAST, ITALY

Borgo Santandrea will open in spring 2020 on the glamorous Amalfi Coast combining a seductive blend of Italian style, local charm and natural beauty, where mid-century design meets Mediterranean style. The 29 rooms and 16 suites, located between 79 and 50 metres above sea level, with beautiful and uninterrupted views, are decorated with a collection of 31 local handmade tiles and iconic and bespoke furniture, which are there to complement the stunning blue of the sea that can be enjoyed at every turn.

Experience the three restaurants to discover the Italian cuisine with regional and Mediterranean flavours re-invented in a modern way, while admiring breathtaking scenery. Swim in our panoramic pool surrounded by terraced gardens, an intimate escape, conceived in harmony with the spectacular native coastal landscapes of the region, providing a link between the core of the hotel and our magnificent private sandy beach 86 metres below, one-of-a-kind on the rocky Amalfi Coast.

- 3 nights in a Deluxe Sea View Room with buffet breakfast for 2 guests
- Valid from 1 July 2020 to 1 November 2020 (2020 season) OR from 1 May 2021 to 30 June 2021 (2021 season). Subject to availability at time of booking.

<https://borgosantandrea.it/>

Value: \$4,866





8. SAN MONTANO RESORT & SPA ISCHIA, ITALY

There comes a time in every trip when the wonder of your surroundings finally sinks in – a moment when you pause and think, ‘This is exactly why I came here’. You may be savoring our “Lemontano” or walking by a storied landmark of a magic island, but for most it’s experiencing an incomparable panorama, surrounded by unobstructed views of natural beauty at nearly every turn. Welcome to **San Montano Resort & Spa on Ischia Island, Italy**. Ischia is a small mountainous island about an hour off the coast of Naples – well away from the hustle and bustle of the nearby Amalfi Coast offering stunning views of the Bay of Naples and some of the best beaches in Italy.

Whether you’re swimming laps in a pool with a view of the Naples coast or overlooking the Pontine island at sunset time, from the comfort of different terraces, each moment delivers unforgettable vistas and panoramas meant to enhance your dream getaway on an island celebrated worldwide. Eight different pools, three restaurants and a seaview spa complete an offer for those who would like to discover a destination with the special feeling of being “home away from home”.

Walking barefoot in our lemon garden with the scents of jasmine, lavender, while relaxing in one of our pools, before you get pampered in the first and only seaview spa in Ischia: Ocean Blue Spa, designed to provide a place in which to regenerate, restore natural equilibrium and improve physical fitness.

Pamper yourself in a magic place where we celebrate the top service as real luxury!

- **3 nights stay in a Side Sea-view room – double occupancy at San Montano Resort & Spa Ischia, Italy**
- **Includes daily breakfast**
- **Valid from 18 April – 24 October 2020 and subject to availability.**

<https://sanmontano.com/>

Value: \$2,440





9. VINCE SORRENTI AT CAFE SYDNEY'S PRIVATE DINING ROOM FOR 10

Get the dinner conversations going with your host **Vince Sorrenti**, one of Australia's best known, respected and most loved entertainers. Vince and his wife Kate will dine with your party of 10 guests in the Private Dining Room of **Cafe Sydney**.

Cafe Sydney's Private Dining Room boasts spectacular views of Sydney Harbour with its own private section of the restaurant's terrace and a mirrored interior. Your four-course menu will be specially prepared by Executive Chef James Kidman and matched with a selection of quality wines.

Cancer Council NSW gratefully acknowledges Vince Sorrenti's support as Master of Ceremonies of the POSH Gala Ball over the past 20 years.

- Dine with Vince Sorrenti and your group of 10 people to enjoy a 4-course dinner in the Private Dining Room of Cafe Sydney. The menu will be specially prepared by Executive Chef James Kidman and matched with a selection of fine wines
- Valid until March 2021 and subject to Vince's availability.

www.cafesydney.com, www.vincesorrenti.com

Value: A laugh a minute!

CAFE SYDNEY
CAFE SYDNEY





10. DORCHESTER COLLECTION - 6 NIGHTS IN ENGLAND

Pass through the doors of a **Dorchester Collection** hotel and you'll experience something truly special. You'll sense it in the way you are greeted; see it in the iconic elegance; discover it in the service and enjoy it in the unique characteristics. Most of all we trust you'll feel it from the moment you arrive until long after you leave. Whether you are staying in London, Ascot, Paris, Milan, Rome, Beverly Hills or LA, each of our hotels offers an unforgettable experience.

THE DORCHESTER, LONDON

Welcome to one of the world's most iconic hotels. Welcome to a place that defines its destination. Welcome to care, to refinement, to whatever your heart desires. Whether you're staying in one of the exquisite rooms and suites, unwinding in the spa, enjoying Michelin-starred cuisine or indulging in an award-winning afternoon tea, you'll experience the epitome of timeless glamour.

COWORTH PARK, ASCOT

This is your secret hideaway amongst rolling fields, where a grand Mansion House and converted stables offer rural charm garnished with modern delight. Here dining options include Michelin-starred modern British cuisine, award-winning afternoon tea and relaxed, rustic dining where muddy boots are welcome. 240 acres offer a thousand ways to explore. The setting is a breath of fresh air for outdoor adventures or luxury downtime, with an award-winning spa offering a welcome dose of relaxation.

- 3 nights at The Dorchester, London in a Junior Suite for 2 guests inclusive of breakfast
- 3 nights at Coworth Park, Ascot in a Junior Suite for 2 guests inclusive of breakfast
- Valid to March 2021 and subject to availability.

www.dorchestercollection.com

Value: \$14,000



COWORTH · PARK
ASCOT
Dorchester Collection



11. A LUXURIOUS CRUISE ON SYDNEY HARBOUR

Come on board and embark on a winning experience for a luxurious three hour cruise on Sydney Harbour with up to 20 clients or friends. The magnificent **JBW** motor yacht is spacious, comfortable, elegant and perfect for any occasion. Aboard the yacht, you and your guests can indulge in a fully catered buffet and beverages (including wine, beer and champagne), all while taking in the breathtaking views of Sydney Harbour. Sailing on the JBW yacht is an unforgettable experience you won't want to miss.

- **3 hour cruise on Sydney Harbour for 20 guests – buffet, beverages and wait staff included**
- **Valid until 31 March 2021 subject to boat's availability**
- **Not available Sundays/public holidays.**

Value: \$8,000

Winning
appliances



12. KAMALAYA WELLNESS SANCTUARY & HOLISTIC SPA, KOH SAMUI

Kamalaya is a multi-award-winning Wellness Sanctuary and Holistic Spa ideally located on the beachfront on the tropical southern coastline of Koh Samui, Thailand. Centred around a monk's cave that once served Buddhist monks as a place of meditation and spiritual retreat, Kamalaya's essence is expressed in its name, 'Lotus (kamal) Realm (alaya)', an ancient symbol for the growth and unfolding of the human spirit.

Founded by John and Karina Stewart in 2005, the resort offers a holistic wellness experience that integrates healing therapies from East and West, a breathtakingly beautiful natural environment, inspired healthy cuisine, holistic fitness practices and customised wellness programs and retreats ranging from Detoxification to Stress and Burnout, as well as Healthy Lifestyle (Optimal Fitness, Ideal Weight, Sleep Enhancement and Structural Revival), Emotional Balance and Personal Yoga Synergy. Kamalaya draws from ancient Asian healing traditions such as traditional Chinese medicine and Ayurveda, holistic western approaches like naturopathy and homeopathy, and current medical research. The beauty lies in how Kamalaya combines treatments and therapies from various traditions in a synergistic way to achieve optimum results. All wellness programs are holistic, gentle, nurturing and sustainable, conveying lifestyle experiences to inspire, empower and motivate guests to continue their healing journey after they leave.

- 5 nights in a Hillside Garden View room for 2 people with airport transfers from and to Samui airport
- Full board: 3 Kamalaya meals per day, à la carte or set detox menu, plus all beverages excluding imported drinks and alcohol
- 5 day Relax and Renew Program including 10 treatments per person
- Valid 22 March 2020 – 31 March 2021, excluding 20 December 2020 to 28 February 2021.
Subject to availability.

www.kamalaya.com

Value: \$8,315





13. EXCLUSIVE DINNER PARTY PREPARED BY A SENIOR CHEF FROM THE SYDNEY RESTAURANT GROUP IN YOUR OWN HOME

Bill and Kathleen Drakopoulos of the **Sydney Restaurant Group** are proud supporters of Cancer Council NSW and are offering an exclusive dining experience for 10 people. This is the ultimate prize for food and wine aficionados, where a senior chef from the Sydney Restaurant Group will design and prepare a special degustation menu including matched wines in the comfort of your own home.

The Sydney Restaurant Group includes Aqua Dining, Ormeaggio at The Spit, Ripples Milsons Point, Ripples Chowder Bay, Via Alta, Jardin St James, Noi, The Fenwick, Caffeine Cartel, The Nielsen, LuMi Bar & Dining and Chiosco by Ormeaggio. From two Hatted fine dining restaurants to relaxed café fare, the diverse group encapsulates the essence of Sydney dining and offers a range of experiences to suit every occasion.

- **A special 4-course degustation menu designed and prepared by a senior chef from the Sydney Restaurant Group for up to 10 guests in your own home (must be located in Sydney)**
- **Matching wines to accompany the degustation**
- **Crockery, cutlery and glassware provided**
- **1 member of wait staff provided**
- **This prize is not valid in the months of November and December. Must advise booking time at least one month in advance. The chef will travel up to 20km from Sydney's CBD. Valid until March 2021.**

Our thanks to Bill and Kathleen Drakopoulos for their generous donation. The Sydney Restaurant Group has raised over \$766,135 in the past 12 years for Cancer Council NSW.

www.sydneyrestaurantgroup.com.au

Value: Dinner party of the year!





14. QUALIA GREAT BARRIER REEF

qualia is nestled neatly into the northern-most tip of Hamilton Island, surrounded by the unsurpassed beauty of the Great Barrier Reef. Its distinctive style combined with its secluded location, intuitive service and meticulously considered details makes it a luxurious world-class resort.

- 3 nights accommodation in a Windward Pavilion for 2 people
- Breakfast at the Long Pavilion each morning
- All non-alcoholic beverages including soft drinks, juices, waters, tea and coffee
- Exclusive use of a qualia 4-seater golf buggy for the duration of your stay
- VIP chauffeur service
- VIP return Hamilton Island airport/marina to resort transfers
- Use of all non-motorised watercraft
- Valid until March 2021, subject to availability.

Value: \$6,300





15. SINGAPORE ESCAPE FOR 4 NIGHTS FOR 2 PEOPLE

Capitalising on its melting pot of cultures, Singapore is fast becoming one of Asia's hit-list destinations. Singapore has numerous attractions - it's where foodies, explorers, collectors, action seekers, culture shapers and socialisers meet – and new experiences are created every day. Your Singapore escape includes two premium five-star hotels; **The Fullerton Hotel Singapore** and **The Fullerton Bay Hotel Singapore**.

THE FULLERTON HOTEL SINGAPORE

The magnificent Fullerton Building is a grand neoclassical landmark built in 1928. Gazetted in December 2015 as a National Monument, it was once home to Singapore's General Post Office, the Exchange Room and Exchange Reference Library, and the prestigious Singapore Club. For nearly a century, it played a pivotal role in Singapore's rich history. Today, The Fullerton Hotel Singapore has been transformed into a stunning 400-room heritage hotel in Singapore.

THE FULLERTON BAY HOTEL SINGAPORE

The Fullerton Bay Hotel is a sleek modern hotel that pays tribute to a bygone era. Elegantly appointed in a contemporary international style, the 100-room waterfront jewel is a spectacular addition to Singapore's vibrant heritage precinct.

- The Fullerton Hotel Singapore; 2 night stay in a Collyer Suite for 2 guests, with access to the Straits Club which provides breakfast, afternoon tea and evening cocktails
- The Fullerton Bay Hotel Singapore; 2 night stay in a Premier Bay View Room for 2 guests, with breakfast inclusive at La Brasserie and Afternoon Tea at Clifford Pier or Landing Point
- Valid from 21 March 2020 to 28 September 2020, subject to availability and blackout dates.

Value: A Singapore escape to remember



THE FULLERTON BAY HOTEL
SINGAPORE



16. A SUB-ZERO & WOLF DREAM KITCHEN WITH WINNING APPLIANCES

Sub-Zero & Wolf dream kitchen with Winning Appliances! Whether you're renovating or building a new house, look no further than Winning Appliances for all your kitchen and laundry needs. Winning Appliances is a family owned and run kitchen and laundry appliance specialist, with seven stores in NSW, two in Queensland, one in ACT, four in Western Australia, and two in Victoria.

Sub-Zero & Wolf appliances offer a powerful combination of performance, design and dependability. Celebrated for their iconic designs, Sub-Zero refrigerators are coveted by the world's top chefs, interior designers and style leaders. Every detail has been meticulously crafted – from the solid doors to the distinctive and stylish handles. The ultra-modern Sub-Zero refrigerators add an unparalleled sense of style and quality to the home. Wolf has been building cooking equipment to satisfy the most demanding professional chefs and domestic cooks for more than 70 years. Handcrafted from the finest materials, Wolf's designs incorporate intuitive technology and superb ergonomics.

This gift certificate may be redeemed for Sub-Zero & Wolf products at the best possible prices to the value of \$20,000. Winning Appliances is proud to present this valuable package for your absolute domestic pleasure!

- The gift certificate can be redeemed on Sub-Zero and Wolf products only to the value of \$20,000 RRP
- A personalised cooking experience in store
- Valid until 31 March 2021.

Generously donated by Sub-Zero & Wolf Australia.

www.winningappliances.com.au

Value: \$20,000





17. KOKOMO — CORPORATE HARBOUR CRUISE FOR 20 PEOPLE

Entertain up to 20 guests in true style while enjoying one of the world's finest harbours. **Kokomo** is a privately owned luxurious 80 foot motor cruiser. You and your guests will enjoy a four hour, fully catered cruise on Sydney Harbour.

- 20 people maximum to cruise Sydney Harbour on a 4 hour fully catered cruise with beverages
- Departs from Birkenhead Point or other agreed nominated pick-up point
- Voucher must be presented
- Dates dependent on availability, not available in December/January or on Sundays
- Strictly valid until March 2021.

Courtesy of Manildra Group.

Value: \$8,000



18. EXPERIENCE WILD BUSH LUXURY ON THE ARKABA WALK

The Arkaba Walk brings luxury touches to an immersive bush experience in the ancient Ikara Flinders Ranges and Wild Bush Luxury's private wildlife conservancy in outback South Australia. Six hundred million years of geological history echo through the stratified layers of Wilpena Pound and the Elder Range, providing spectacular backdrops throughout the walk; while craggy sandstone bluffs and dry creek beds lined with River Red gums offer a quintessential outback landscape. Large numbers of red and western grey kangaroos, wallaroos and emus are regular sightings along the walk, and the country is littered with the stories, and often heroic failures, of early pioneers who tried to eke a living from the harsh but beautiful country.

- **Your Arkaba Walk for 2 people is a fully hosted and expertly guided experience and includes 2 nights camping in deluxe swags on signature star beds; 1 night in the rustically chic 150-year-old Arkaba Homestead, member of Luxury Lodges of Australia; all gourmet meals and drinks; a support vehicle for transporting luggage and a suitable hydration backpack**
- **The prize will be valid for Wild Bush Luxury's 2020 walking season, which runs until 11 October 2020 with blackout periods in April, September and October**
- **To be booked on an Arkaba Walk, depart from Arkaba Homestead with 2 other confirmed walkers. Travel must be in the 2020 walk season, with no extensions available**
- **Walks departing from Adelaide are available at a charge of \$500 per person. This includes transfers (one way by air, Adelaide to Hawker and by road through the Clare Valley wine country) with lunch included.**

www.wildbushluxury.com

Value: \$4,800



THE ARKABA WALK
Wild Bush Luxury



19. SHELDON & HAMMOND KITCHENWARE COLLECTION

Sheldon & Hammond is an Australian distributor of premium kitchen and homeware brands. This cookware collection includes quality essentials from across the seven seas: SCANPAN cookware from Denmark, Global Knives of Japan, Chasseur French Ovens and Cuisinart Appliances.

- **SCANPAN HaptIQ** – A brilliant example of Danish design and manufacturing, the HaptIQ series by SCANPAN features sleek, mirror-polished exteriors. The 26cm Fry Pan is a practical size for frying, poaching and searing, the Wok features a flat base for induction compatibility and the Dutch Oven holds a mighty 6.5 litres to create large batches of stocks, soups or pasta. The STRATANIMUM+ non-stick surface is Scanpan's strongest yet and makes clean up a breeze.
- **GLOBAL KNIVES Takumi® Knife Set** – This set includes Global's five best-selling knives, all housed on an elegant magnetic storage block in beautiful Maple wood which allows your knives to be safely on display. The name Takumi translates to "Artisan" in Japanese, which pays tribute to the skilled workers in the GLOBAL factory in Japan that continue to make their knives by hand in the traditional Samurai tradition.
- **CHASSEUR Round French Ovens** – Produced in the Champagne region of France, each piece of Chasseur cast-iron cookware is hand cast in individual sand moulds before the trademark coloured enamel is skilfully applied by hand to create truly unique cookware; Environmentally friendly. Chasseur uses up to 80% recycled materials in every French Oven. 22cm and 24cm in French Blue.
- **CUISINART Precision Stand Mixer** – Boasting a larger bowl than most and a powerful yet efficient motor, Cuisinart's stand mixer includes a mixing paddle, whisk and dough hook to manage all your kitchen mixing tasks.

Value: \$4,243





20. FLY FISHING AT STONEFLY LODGE, SOUTH ISLAND, NEW ZEALAND

Award winning **Stonefly Lodge New Zealand** provides luxury five-star accommodation and dining on 56 hectares of private forest on the banks of the Motueka River, only a 50 minute drive from Nelson. Architecturally designed and built from local stone and timber, the lodge is centrally located between three spectacular National Parks (Abel Tasman, Nelson Lakes and Kahurangi National Park) making the Lodge an ideal base from which to explore the region.

Activities from the Lodge include fly fishing, sea kayaking, guided and unguided hiking tours, wine tasting, whitewater rafting, rock climbing, abseiling, horse riding tours, and exploring the many art and craft studios in the region.

Four guest rooms are located upstairs complete with ensuites, heated towel rails, and private balconies overlooking the river and surrounding mountains. The Lodge has been designed with the discerning international traveller in mind, offering luxurious appointments and professional hospitality. This is an ideal property for exclusive use or incentive programs.

- **3 nights luxury accommodation for 2 including breakfast and a 4-course gourmet dinner daily**
- **2 days guided fly fishing including the use of all Lodge fly fishing gear**
- **Valid 14 October 2020 to 15 December 2020 and 15 March 2021 to 30 April 2021.**

www.stoneflylodge.co.nz

Value: \$5,000





21. JETMASTER FIREPLACES - STYLE MEETS WARMTH

Warm up your space with a **Jetmaster**, Australia's leading brand in gas and wood fireplaces. A Jetmaster fireplace will transform your room, giving the beauty of an open fire together with the super heating efficiency of the Jetmaster system. Jetmaster staff will help you select a product to suit your needs.

- Warm up with a Jetmaster fireplace
- Valid until March 2021. Installation not included.

www.jetmaster.com.au

Value: \$5,500





22. LUXURIOUS CAMPING SAFARI AT PAPERBARK CAMP JERVIS BAY

Hidden in a tranquil bush setting on the banks of a sleepy waterway, just minutes from the pristine beaches of Jervis Bay is **Paperbark Camp**, Australia's original luxury safari camp. Escape from the everyday and get back to nature in style, enjoying delicious food and wine and the unforgettable experience of sleeping under the stars in the comfort of your own private canvas hideaway. The camp's tents are thoughtfully placed amongst the soaring eucalypts and with the Gunyah treetop dining room and lounge as its central communal meeting place. The King Deluxe tent can accommodate up to five people, so is great for couples, families and friends looking to spend precious time together. The Deluxe safari tent is perfect for two people, and can also accommodate an extra guest with a larger deck area with lounge as well as a freestanding bath and separate shower. Sustainably designed with minimal impact on the environment, the tents have a pared-back style, are naturally ventilated and include solar powered lighting and candlelight as well as handmade soaps and gowns to wrap yourself up in after a hot shower or bath. Whether it's a romantic getaway, some well earned time away from a busy modern life, a get together with loved ones or a milestone celebration, Paperbark Camp offers a beautiful space to re-connect, unwind and share special times.

- A 3 night stay in the King Deluxe and Deluxe Safari tents. Host a group of up to 8 on a luxurious safari getaway in Jervis Bay
- The King Deluxe tent can accommodate up to 5 people, and the Deluxe Safari tent can accommodate up to 3
- Valid from March 2020 to March 2021. Please book as early as possible to secure your preferred dates.

Generously donated by Maryrose and Michael Morgan

Value: \$4,450





23. KATE McClymont AT THE TILBURY HOTEL FOR 10

Join **Kate McClymont** for a “tell all behind the scenes” in Sydney’s murky underworld. Investigative journalist Kate McClymont must be the best-known journalist in NSW, and probably has the most intriguing tales of any writer around. She is certainly one of the most awarded Australian journalists and recently won her 6th and 7th Walkley Awards in 2018. As a crime reporter for the Sydney Morning Herald, Kate spends her time mixing with and writing about some of the shadiest characters in the story of Sydney. Once derided by Paul Keating for spending her time “chasing subterranean odours”, Kate’s sense of smell has led her to unearth some of the underworld’s most fascinating tales of betrayal, corruption and crime.

Kate will dine with your party of 10 guests at **The Tilbury Hotel** restaurant. The Tilbury is one of Sydney’s classic heritage-listed pubs, built in 1921 in the Inter-War Free Classical architectural style. With the Tilbury Chefs at the helm, the Tilbury offers fresh seasonal dishes. The Tilbury in Woolloomooloo is the perfect setting for a crime reporter, as when the hotel was built, the Razor gangs dominated the Sydney crime scene and “Tilly” Mary Devine was known as the Queen of Woolloomooloo.

- **Dine with Kate McClymont for a “tell all behind the scenes” of Sydney’s murky underworld and your group of 10 people will enjoy a 3-course lunch or dinner at the Tilbury Hotel, Woolloomooloo. The menu will be specially prepared by Executive Chef Mark Holland and matched with a selection of fine wines**
- **Valid until March 2021 and subject to Kate’s availability.**

Please note: guests are welcome to order extra beverages once the meal service has concluded at their own expense.

Value: A “tell all behind the scenes” in Sydney’s murky underworld





24. DISCOVER THE REAL FIJI WITH CAPTAIN COOK CRUISES

Experience the Fiji few travellers get to see on a **Captain Cook** adventure and discovery small ship cruise. We are the premier small ship cruise provider in Fiji and, with over 20 years experience cruising in Fiji, our itineraries have been carefully designed to give you the best possible experiences in the time you have available.

The Yasawa Islands offer some of the most dramatic scenery in the South Pacific. With at least one new island and coral reef to visit daily, these cruises have a greater emphasis on beach and water activities. The three-night cruise features the southern islands including the Waya and Sacred Islands. The four-Night cruise explores the remote northern islands from Naviti to Yasawa including the famous Sawa-i-lau limestone lagoon and caves. Combine both for the ultimate seven-Night Yasawa Islands cultural and island experience. On the first Tuesday of each month cruise to Vanua Levu in the north of Fiji rather than the Yasawas for the choice of two amazing itineraries to places without postcards including Savu Savu, Levuka, Taveuni, Labasa, Kioa Island and the Great Sea Reef.

Your 7 night cruise for 2 people includes:

- All meals and entertainment
- Daily island stopovers and water activities
- Guided island and school tours
- 24-hour self service tea and coffee bar, use of snorkeling equipment & mini gym, tropical island lovo feast and kava ceremony
- Snorkelling and glass bottom boat tours
- Transfers at the end of your cruise
- Valid until 31 March 2021 and subject to availability
- Accommodation for 2 adults in a B Ocean Stateroom.

Value: \$9,280





25. SHITBOX RALLY 2020 SPRING

Since the creation of the first **Shitbox Rally** in 2010, James Freeman has been instrumental in raising over \$21 million for cancer research. Shitbox rallies take participants across the most rugged terrain in Australia in cars valued at \$1,000 or less and deliver them an experience they will never forget.

Shitbox Rally 2020 Spring will be held from 10-16 October 2020 and will travel from Mackay to Darwin. The rally takes the roads less travelled to isolated, remote and strikingly beautiful parts of Australia with plenty of river crossings and bull dust along the way. Past participants say that Shitbox Rally is an unforgettable, life-changing experience that connects them to like-minded people and the incredible beauty of the Australian Outback.

"It was a hoot. The fellowship enjoyed by all participants was amazing. The tracks were interesting, taking many people into completely new regions of our great wide brown country. I would have been very happy to turn around and retrace our tracks back home. It was great - a few challenges, but you need challenges to keep it interesting. Once again, congratulations and many thanks for a wonderful rally." -Patrick Liston, Team Patto and Fox (Spring)

"As a rally newby – but a long-time advocate for people afflicted with cancer - I wasn't really sure what to expect. What I found was a community of people who are committed to doing something positive about cancer, while determinedly having a great time." -Trisha Cashmere, Team Angus & the Beefcakes (Autumn)

- **The highest bidder will forego the usual requirement to raise the minimum \$5,000 but will still need to find a co-driver, buy, register and get a car to the start line of the Spring rally in Mackay**
- **The winner will also need to cover travel costs such as camping fees, flights and petrol.**

www.shitboxrally.com.au

Value: \$5,000





26. CRUNCH TIME WITH DAVID WILLIAMSON ON 27 MARCH 2020

David Williamson AO and his wife Kristin, the **Ensemble Theatre** and **Bayly's Bistro** are proud to once again support Cancer Council's POSH Auction. Treat your party to a sumptuous dinner at Bayly's Bistro followed by the performance of **CRUNCH TIME** at the Ensemble Theatre. Playwright David Williamson and his wife Kristin will join your group for both dinner and the theatre.

Sparkling with razor sharp wit and humour, **CRUNCH TIME** tackles pertinent social issues head-on in this tale of family and duty. Don't miss Australian theatre heavyweight David Williamson's final play before retirement. Directed by Mark Kilmurry with a cast including John Wood (**BLUE HEELERS**) and Guy Edmonds (**BETRAYAL**). Steve is the typical Aussie bloke, self-assured, social and sports-mad. Recently retired from a high-flying career, he's passed the family business over to his son Jimmy – a chip off the old block. But his eldest son Luke, an engineer with more of an interest in algebra than AFL, has never quite seen eye-to-eye with his dad and they haven't spoken in eight years. When Steve suddenly falls ill, time is running out to repair their broken relationship – and Luke and Jimmy will have to go to extreme lengths to fulfil their father's final wishes.

"I always return to writing about families because they shape us and give rise to our most intense emotions, be they tears of joy or tears of rage." – Playwright David Williamson.

Performance date: Friday 27 March, 8.15pm

Playwright David Williamson and his wife Kristin will join your group for both dinner and the theatre:

- 10 tickets to **CRUNCH TIME** on Friday 27 March at 8.15pm
- 10 two-course meals plus a glass of house wine at Bayly's Bistro.

www.ensemble.com.au

Value: You'll be dining out on this one for years!





Compliments of the RAN

27. AUSTRALIA DAY 26 JANUARY 2021 WITH THE ROYAL AUSTRALIAN NAVY

The Royal Australia Navy (RAN) is proud to support Cancer Council NSW by offering two people the unique opportunity to embark in a warship in Sydney Harbour for the Salute to Australia, on Australia Day 26 January 2021. You will be able to witness the festivities taking place on Sydney Harbour including witnessing Her Excellency, The Governor of NSW receive a 21 gun salute at midday, an Australian Citizenship Ceremony on the ship, a tour of the ship including the bridge, a traditional Australia Day BBQ and hopefully some cricket with Sydney Harbour as your backyard. You will also have an opportunity to mingle with the crew and other VIPs.

- The RAN is giving 2 adults (minimum age 14) a unique opportunity to embark in a warship in Sydney Harbour for the Salute to Australia, Australia Day 26 January 2021.
- For your safety, sea ride is subject to your general fitness and mobility. There is a requirement for completion of mandatory health screening documents prior to embarkation. Be aware the ship's steep ladders make access difficult for the mobility impaired
- Transport to and from the vessel is at the winners' expense
- The winner must be available to embark on Australia Day 2021
- Every sea ride is subject to cancellation at short notice in the case of unforeseen operational requirements. Should this occur, we will discuss alternate options with you.

**This item is tax deductible*

***Image not representative of vessel offered*

Value: This is a once in a lifetime opportunity not to be missed



'Looking Down on the Daly River, NT'

28. PRIVATE BOAT HOUSE ESCAPE, ART TUTORIAL AND ARTWORK

Dangar Island is the perfect location to enjoy fishing, walking, swimming – or simply relaxing in peace. The Island is a charming, traffic-free, natural paradise on the Hawkesbury River. Local artist **Dr Paul Taylor** and his wife have lived on Dangar Island since his retirement from orthodontic practice in mid-2018. They are offering a unique opportunity to discover the natural beauty of this remote island, which is rich in European and Indigenous history, and take home a beautiful original piece of artwork. "After I retired, my wife and I decided to move and live full time at our house on Dangar Island," Paul says. "In that same year I built a studio in the backyard and in order to justify such a folly I made a commitment to myself to paint or draw a picture every day in 2019. To my amazement I fulfilled that commitment and the artwork being auctioned is from Day 352."

The framed artwork was inspired by the time Paul and his wife spent up in the Northern Territory in 2018 and 2019 living with an Aboriginal community in the Daly River. "This part of the world is very tropical but rainfall of late has been low so there is a desert quality to the picture as well. If you look closely you may also see the odd croc!"

Two people are offered two nights of accommodation in their private, two bedroom boat house on the water's edge. Paul would also be happy to provide a local walking tour, including showing his studio and a brief art tutorial, if that is your interest.

Boat house

- 2 night stay for 2 people in a private boat house on Dangar Island
- The boat house features a bedroom with King Bed that opens onto the river, a bathroom, self-contained kitchen and a large living space
- Optional one hour studio tutorial session with artist Dr Paul Taylor
- Optional walking tour of the island with Dr Paul Taylor
- Valid March 2020 to March 2021 and subject to availability.

Artwork

- 'Looking Down on the Daly River, Northern Territory' - 42cm x 59.4cm - acrylic on paper.

Value: Priceless Serenity



29. ROYAL PACIFIC HOTEL HONG KONG

Positioned in an enviable harbourside location, **Royal Pacific Hotel** enjoys easy access to Hong Kong's business and retail hubs. With views of Victoria Harbour, the hotel delivers convenience, comfort and connectivity to the best places to visit in Hong Kong. In addition to the Hotel's perfect location right on Canton Road, a fashionable address, the hotel is atop the China Ferry Terminal. The High Speed Rail, MTR station, Western Kowloon District and the iconic Star Ferry, which brings you to HKCEC in 18 minutes, are within walking distance.

- **Royal Pacific Hotel Hong Kong - 2-night stay at a Deluxe Harbor View Room for 2 guests, with breakfast inclusive at Café on the PARK**
- **Valid from 21 March 2020 to 21 June 2020, subject to availability and blackout periods.**

Value: \$1,380



30. GOLD COAST HOTEL HONG KONG

Gold Coast Hotel Hong Kong is Hong Kong's only resort hotel is nestled on the Hong Kong Gold Coast in the New Territories. Tranquil tropical gardens with exclusive direct access to Golden Beach provide the perfect setting for a relaxing holiday. All rooms and suites offer open views of the sea or Gold Coast Yacht and Country Club. With five restaurants within the hotel – from Michelin recommended Chinese restaurant Yue, the newly launched Gold Coast Prime Rib, to our daily buffet and poolside barbecue at Café Lagoon – a diverse range is conveniently located within the hotel. The Gold Coast Precinct shopping plaza, restaurants and marina are just a five-minute walk from the hotel.

- **2-night stay at the Gold Coast Hotel in Hong Kong in one of their themed rooms inclusive of breakfast at Café Lagoon**
- **Valid from 21 March 2020 to 21 June 2020, subject to availability and blackout periods.**

Value: A gorgeous property in Hong Kong!





31. THE FULLERTON HOTEL SYDNEY

Steeped in character and elegance, **The Fullerton Hotel Sydney** is a luxury five-star hotel located in the heart of Sydney's financial and fashion district, and housed in the historic former General Post Office building.

- 3 nights for 2 people in an Executive Suite with Executive Club benefits
- \$500 dining voucher
- Valid from 21 March 2020 to 21 March 2021, subject to availability and blackout periods.

Value: \$2,070



THE FULLERTON HOTEL
SYDNEY



32. THE WESTIN SINGAPORE

Singapore is just steps away from many international corporate offices, retail shops, restaurants and conveniently connected to the city's countless attractions, including the nearby Marina Bay Sands Casino. Nourish your body and soul at Seasonal Tastes or Cook & Brew while connecting with colleagues and friends. Find rejuvenation and relaxation at the outdoor infinity pool, 24-hour WestinWORKOUT® Fitness Studio and Heavenly Spa by **Westin™**. Our 305 guest rooms, including 16 suites, are restorative sanctuaries above the city. Elevate your senses with floor-to-ceiling windows, intuitive technology and a refined style, featuring comforts such as rain-forest showers and our signature Heavenly® Bed.

- 2 nights weekend accommodation in a Deluxe Room inclusive of breakfast for 2 people (Friday-Sunday)
- Valid from 21 March 2020 to 20 September 2020 only. Subject to availability and blackout periods.

Value: \$2,364

THE WESTIN
SINGAPORE



33. SUMMER FAMILY HOLIDAY AT THREDBO'S THE SILVER BRUMBY LODGE

The Silver Brumby Lodge boasts the best view of Thredbo. Relax as you enjoy a week taking in the mountain views or you can try your hand at summer activities that Thredbo has to offer, including bushwalking, horse riding, mountain bike riding, swimming, golf and tennis.

- 5 nights for 4 people at The Silver Brumby Lodge, with dinner and breakfast included
- Available during December/January holidays 2020/2021 (excluding Christmas day to New Year's Eve). Also available April school holidays 2021 (excluding Easter).

Value: \$2,800



34. RANCHO SURFSIDE RETREAT, CRESCENT HEAD

With pristine beaches, fabulous surf and swimming conditions plus great fishing, exciting nature walks and superb weather all year round, a holiday at **Rancho Surfside Retreat**, in Crescent Head is an experience not to be missed! The self-contained Balinese villas blend both modern and authentic Balinese design elements to create a luxurious, relaxed setting for your next beach holiday.

- 5 nights accommodation at Rancho Surfside Retreat for 6 people in 2 Bali Villas (each Bali Villa has 1 queen and 1 king single)
- Enjoy additional shared facilities such as pool, tennis court and golf course
- Valid until 31 December 2020 not valid for NSW school holiday periods, subject to availability. Linen not included.

Value: \$2,170





35. VICTORINOX TRAVEL GEAR

Enjoy two pieces of travel gear from **Victorinox**. Our Connex Frequent Flyer suitcase combines a clever space-saving interior with a bright exterior. Designed for functionality as well as looks, the integrated multi-tool means you'll have the practicalities covered, whether you're flying solo or heading off for a family adventure. The Connex Medium case makes rushing for a flight a whole lot easier. You'll see this case before hear it: super-quiet wheels and silent Lisof tyres mean you can travel effortlessly over any surface. The expandable packing compartment makes optimal use of space, and the lightweight yet state-of-the-art components will keep your precious things safe. Travel better; travel connected.

- A Connex Frequent Flyer suitcase
- A Connex Medium suitcase.

Value: \$1,298



36. SHERATON GRAND MIRAGE RESORT, GOLD COAST

Sheraton Grand Mirage Resort is the Gold Coast's only beachfront resort. Surrounded by sparkling lagoons and tropical gardens, the resort hosts a variety of meeting spaces and dining options, as well as a swim-up pool bar.

- 2 nights at Sheraton Grand Mirage Resort in an Ocean Premium Room with full buffet breakfast in Terraces Restaurant
- Valid until 30 September 2020 (not valid Saturday nights/peak season).

www.sheratongrandgoldcoast.com

Value: \$1,380





37. SALA PHUKET MAI KHAO BEACH RESORT

SALA Phuket Mai Khao Beach Resort is a chic five-star resort featuring a collection of pool villas, suites and luxurious facilities in the unspoiled northwest corner of Phuket, overlooking the Andaman Sea.

Nestled on the secluded shores of Mai Khao Beach, this contemporary resort is just 20 minutes from Phuket International Airport. World-class golf courses and the iconic seascape of Phang Nga Bay are also located nearby.

SALA Phuket Mai Khao Beach Resort features two large beachfront swimming pools, a world-class seafront restaurant and bar, the serene SALA Spa and much more.

- 3-night stay in a Garden Pool Villa including breakfast for 2
- Valid from 21 March 2020 to 20 March 2021. Subject to blackout periods.

Value: \$2,155



38. SIAM @ SIAM DESIGN HOTEL BANGKOK

Located off Siam Square in one of Bangkok's most vibrant, energetic neighbourhoods, **Siam@ Siam Design Hotel Bangkok** is equal parts cozy, rebellious, and eccentric. The 25-storey hotel is decorated with colourful Thai art pieces, a bold theme that continues throughout all the guestrooms, and on-site restaurants, bars and facilities.

Ascend to the upper floors and you'll find TAAN, the city's top purveyor of "hyper-local" innovative Thai cuisine, and The Roof Gastro, the perfect spot for sundowner drinks and nibbles paired with unparalleled views of downtown Bangkok.

- 3-night stay in a Club room, inclusive of Club benefits for 2
- Valid from 20 March 2020 to 20 March 2021. Bookings to be made at least 7 days in advance and subject to blackout periods.

Value: \$1,590





39. BONVILLE GOLF PACKAGE FOR 2 NIGHTS

Bonville Golf Resort has been voted 'Australia's most beautiful mainland golf course' 16 years in a row by The Golf Course Guide and in 2016, 2017 and 2018 'Australia's Favourite Golf Course' in Golf Australia Magazine. The resort is 10 minutes south of Coffs Harbour and is indeed impressive, with its lush setting and extensive facilities. This is your opportunity to play at one of the most beautiful Par 72 championship golf courses in Australia, if not the world. Once you have experienced the beauty and allure of Bonville you will want to return again and again.

- 2 night stay including 2 rounds of golf for 2 people and cooked breakfast each morning
- Valid until 24 December 2020 midweek (Sunday – Thursday) only and subject to availability.

Value: \$1,000



40. JONAH'S — ESCAPE, RELAX AND INDULGE

Jonah's Whale Beach is one of Australia's most stunning ocean retreats. Located on Sydney's Northern Beaches, Jonah's is a 50 minute drive from the city or an amazing 20 minute seaplane flight from Rose Bay. All of the rooms offer expansive views of the ocean with private balconies. Jonah's multi-award-winning restaurant offers 180-degree ocean views and is renowned for its contemporary Australian cuisine with Italian influences, accompanied by more than 1,600 wine labels.

- Overnight midweek escape in a newly refurbished Ocean Retreat Room, 3-course dinner and breakfast
- Available Sunday to Thursday, subject to availability
- Valid to 21 March 2021, not available in December or January.

Value: \$1,044





41. SAIL IN EDWARDIAN SPLENDOUR

Enjoy a 1903 gentleman's schooner *Boomerang* Cruise on Sydney Harbour aboard this Edwardian treasure lovingly maintained by the **Sydney Heritage Fleet**. *Boomerang's* elegant lines are timeless. Entertain up to 25 passengers.

- Up to 25 passengers cruise for 3 hours on the 1903 gentleman's schooner, *Boomerang*
- Cruise departs from Rozelle Bay
- Catering available at winner's expense
- Valid until 21 March 2021.

www.shf.org.au

Value: An unforgettable cruise through Australia's nautical history!



42. SAIL THE TALL SHIP *JAMES CRAIG*

Barque ***James Craig*** is rightly famous around the world – she is Sydney's only 19th Century square rigger who regularly sails. Her incredible restoration to full sailing condition was recognised in 2003 by the World Ship Trust's award of the prestigious Maritime Medal. The *James Craig* restoration cost almost \$30 million and took nearly 40 years to complete after she was rescued from Recherche Bay in far southern Tasmania.

- 4 people have the opportunity to sail on 1874 tall ship *James Craig* across Sydney Harbour and out past the heads for a day sail
- Cruise departs from Pyrmont
- Catering is included – morning tea, lunch and afternoon tea
- Valid until 21 March 2021.

www.shf.org.au

Value: Experience the thrill of ocean sailing on a fully restored tall ship from the 1870s!





43. DAIKIN ZENA AIR CONDITIONER

At **Daikin**, we are not just building products with energy efficiency in mind – equally important is the form factor, aesthetic appeal and connectability to smartphone devices. Our next generation Zena achieves all this and more! Engineered with the latest technology, its stylish and elegant design integrates seamlessly into the modern home. Available in White Hair Line or Black Wood finish.

- **Daikin Zena 6.0kW (FTXJ60TVMAW)**
- **Crest Air Conditioning will be pleased to install the system for you. Installation is included in Sydney only.**

Value: \$3,500



44. RHINO-RACK

The Rhino-Rack 440 litre Master-Fit Luggage Box offers the perfect solution for those who need to take a lot with them when they travel – whether you are an outdoor adventurer with lots of equipment or a large family that likes to go on road trips. Use this luggage box for camping gear, prams, snowboards or skis. It fits simply onto the two-bar roof rack system that also comes with the luggage box.

- **440L Master-Fit Luggage Box and 2 bar roof rack from Rhino-Rack.**

Value: \$1,100





45. PLAY GOLF WITH PETER O'MALLEY FOR 3

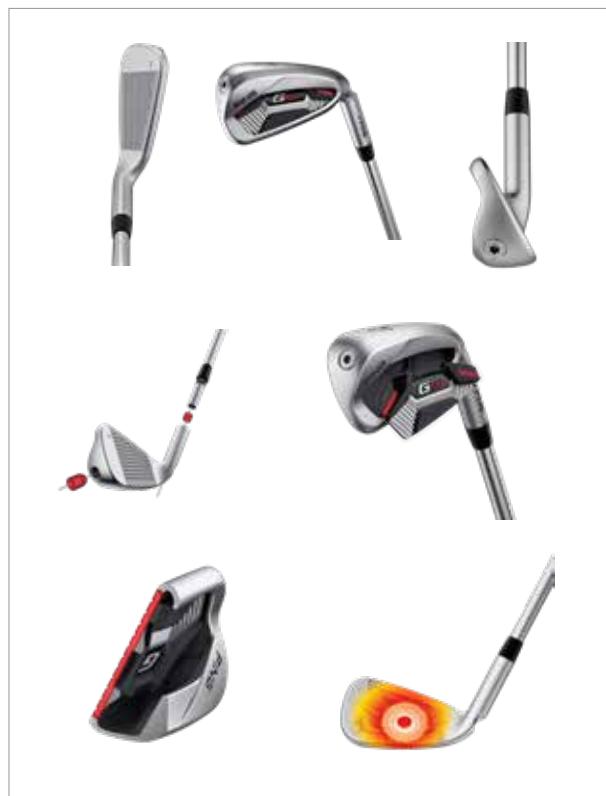
This unique experience has you and two lucky friends making up a golf foursome with **Peter O'Malley**, playing 18 holes of never-to-be-forgotten golf at The Royal Sydney Golf Club.

Peter O'Malley continues to be one of Australia's leading golfers following his win in the 2005 New Zealand PGA on the Australasian Tour, in addition to winning seven professional events in Europe and Australia and representing Australia in three World Cups. Peter has also taken out the highest honour for an amateur – the Eisenhower Trophy. Born in Bathurst, NSW, the likeable O'Malley is known for his driving accuracy and precise iron play.

- A round of golf for 3 people with Peter O'Malley at The Royal Sydney Golf Club
- Valid until December 2020. Subject to Peter's availability. Green fees at the guests' expense. All 3 players must have a GOLF link number.

**This item is tax deductible*

Value: Memorable golfing moments!



46. PING G410 SERIES IRONS

In the G410 iron, **PING** engineers challenged the idea that you can't make an iron smaller and increase the forgiveness at the same time. PING developed a clean, highly appealing design with less offset and a significantly higher MOI when compared to the G400 iron. It's the most forgiving iron of its size. It will appeal to a very wide range of golfers as it produces faster ball speeds, maximum forgiveness and amazing feel with a pleasing appearance – all the attributes they need to hit their iron shots higher, farther and straighter. Developed to help golfers play their best – you will love your new set of PING G410 irons.

- 1 set of 8 PING steel irons
- 1 PING cart bag
- 1 PING glove.

Value: \$2,050

PING



47. CANCER COUNCIL 7 BRIDGES WALK 2020

This unique experience has you and nine friends or work colleagues enjoying a significant scenic walk on the Sydney events calendar! The **Cancer Council 7 Bridges Walk** is a 27km walk that takes you around the upper harbour across the seven beautiful bridges of Sydney. More than 113,500 walkers have taken part in the 7 Bridges Walk over the past 13 years, and over \$5.9 million has been raised for Cancer Council. On Sunday 25 October 2020, the event runs from 7.30am to 4.30pm and features six villages with food and entertainment.

- 10 participant entries for Cancer Council 7 Bridges Walk on 25 October 2020
- Access to the \$1k VIP Club
- Perfect for a day out with friends, family or a corporate engagement.

Value: \$850



48. PERTH ESCAPE – 3 NIGHTS FOR 2 PEOPLE

Experience an unforgettable luxurious escape to Perth, Western Australia. This package includes a stay and spa package at **The Westin Perth**, and a vineyard tour for 2 at **Cape Mentelle Vineyards** in Margaret River.

- **Westin Perth – 3 night's accommodation for 2 people in a Deluxe Room inclusive of breakfast in Garum Restaurant**
- **Cape Mentelle – A "Behind the Scenes Tour and Tasting" for 2 people including food matching and a twin pack of wine, which includes 2 premium Cape Mentelle wines**
- **Bodhi J at The Westin Perth - A full body Aromatherapy massage using carefully selected blended oils, this treatment is designed specifically to help you relax**
- Valid until March 2021, subject to availability.

Value: An unforgettable escape





49. THE BLACKWOOD HUNTER VALLEY

Designed by the highly regarded Bourne Blue Architecture, **The Blackwood** is the latest addition to the Woods Pokolbin. The Scandi inspired, luxury accommodation is the quintessential couples retreat, and with its private plunge pool and quaint jetty, it is truly the ultimate Hunter Valley sanctuary. In addition, **Two Fat Blokes** are providing a full day Uncork the Hunter tour. You will get to participate in: multiple wine-tastings, a cheese and wine masterclass, a mystery wine experience, chocolate and wine pairings, a super generous lunch, a glass of wine, and a tour of a working brewery while you finish your day with a few cold beers in hand.

- 2 nights accommodation for 2 people
- Lunch for 2 at nearby Wine House Hunter Valley including a bottle of winemakers selected wine
- Valid until March 2021. Bookings to be made directly with The Woods at Pokolbin. Not available on event and public holiday weekends
- Uncork the Hunter tour is a full day tour from 10am-5pm.

Value: \$1,650

The Woods
POKOLBIN

TWO FAT BLOKES
gourmet tours & kitchen



50. TAKE YEARS OFF YOUR AGE WITH A TREATMENT PACKAGE

Visit the luxury **MD Cosmedical Solutions** clinic at the Sheraton on the Park, Sydney. You can select from treatments including Fraxel laser skin resurfacing, Thermage non-surgical facelift, fat and cellulite treatments, laser vein treatments, Botox wrinkle treatments, dermal fillers, laser hair removal and skin diagnosis. Our specialists can assist in assessing your requirements and planning your treatment package. All treatments performed at the MD Cosmedical Solutions clinic use state-of-the-art technology.

- Treatment/s from MD Cosmedical Solutions to the value of \$2,000.

www.mdcosmedicalsolutions.com.au

Value: \$2,000

md
cosmedica
solutions



51. GO KART, GO YOUR OWN MINI GRAND PRIX FOR 20

Need an uplifting birthday bash? Why not rev it up at **Sydney Premier Karting Park**? Take up to 20 mates or moguls to experience all the thrills of a Formula 1 driver including warm up and racing laps at your own Mini Grand Prix.

Cheer your team through high-powered laps (all safety gear included) at an unforgettable afternoon of competition and camaraderie. Complete with a Grand Final and Award Presentation, this event is a rare and exciting item.

Be 'Ricciardo for-an-arvo'!

- Go karting for up to 20 people
- Available any Monday to Thursday afternoon until March 2021.

www.easterncreekkarts.com.au

Value: \$3,900

SYDNEY SWANS



52. SYDNEY SWANS TAKE ON NORTH MELBOURNE AT THE SCG - CORPORATE BOX FOR 8

Cheer on the red and white on Sunday 3 May 2020. Watch the **Sydney Swans** take on North Melbourne in this blockbuster game!

Save the date, as you and seven friends will be treated to first class hospitality in a Corporate Box at the Sydney Cricket Ground (SCG)!

Look at the list of goodies in this exclusive package for you and your Swans fans!

- 8 tickets to Sunday 3 May 2020 Sydney Swans vs North Melbourne game at the SCG
- Delaware North will provide catering inclusive of beverages and grazing food
- 2 parking permits
- Sydney Swans Chairman's Club after-match function passes where you will hear an exclusive interview with a coach and player
- 2020 Sydney Swans signed guernsey.

Value: Priceless as a Sydney Swans supporter!

SCG
EVENTS



53. QANTAS FLIGHT SIMULATOR EXPERIENCE FOR TWO

Qantas Flight Training offers its expertise and facilities for all flight and cabin crew. Qantas Flight Training instructs, develops and examines the proficiency of over 10,000 aircrew each year.

Qantas Flight Training has the most advanced and extensive fleet of full motion flight simulators in the region. The simulators have as standard state-of-the-art visual fidelity, motion and sound. This allows crew to be trained in all aspects of normal and non-normal operations, including instrument approaches and landings in all weather conditions.

- 1 hour flight simulator experience with Qantas Flight Training for 2 people
- Valid until September 2020.

**This item is tax deductible*

Value: Qantas flight simulator experience!



54. GALLERY 109 MANLY

Gallery 109 Manly is a new exhibition space at 109 Sydney Road Manly, offering a space for artists to promote their work in a professional but nurturing environment. The successful bidder – painter, sculptor, photographer, printmaker, jeweller, etc – will be able to book a two-week period within the next six months for either a group or solo exhibition.

The gallery will provide the following services:

- Hanging and dismantling the show, including use of the gallery's hanging apparatus
- Promotion of the show on the gallery website and gallery mailing list
- Opening night function within the gallery's catering budget. Can be upgraded if requested
- Opening and managing the space from Wednesday to Friday. Exhibitor to manage on weekends
- Valid from March to December 2020. Subject to availability.

www.gallery109.com.au

Value: \$1,800





55. ROCHEFORT TAILOR – SHIRTMAKER – TIEMAKER

Rochefort continues to commit to true tailored suiting, allowing the customer to choose fabric and style. The Rochefort boutique is tucked away in the historic St James Trust Building, Sydney. Your suit will require a few fittings to make it feel and fit perfect for you! Rochefort says its three main criteria for a great garment are the cloth, the styling and then the tailoring.

Holland & Sherry, located on Savile Row, London, has been supplying tailors and luxury brands with the finest wool and silk cloths for 180 years. Holland & Sherry will provide the cloth and Rochefort will personally tailor your bespoke suit ensuring that you will receive a finely crafted suit, fitted for only one...you!

- A bespoke tailored men's suit or jacket/trouser combination
- The cloth will be from Holland & Sherry's well-known Target range
- Valid until March 2021.

www.rochefort.com.au, www.hollandandsherry.com

Value: \$3,800

EST. 1836
HOLLAND & SHERRY
SAVILE ROW • LONDON

Rochefort
TAILOR • SHIRTMAKER • TIEMAKER



56. JULIE McCROSSIN WILL GET YOU TALKING

Julie McCrossin gets people talking. After over 20 years as a broadcaster with ABC Radio National, ABC TV and Network Ten, she is now a freelance journalist and broadcaster. Julie also facilitates conferences and seminars. Julie has qualifications in the arts, education and law. After treatment for stage four throat cancer in 2013, Julie is now an Ambassador for Beyond Five, Targeting Cancer and TROG Cancer Research. Julie hosts the podcast series, *The Thing About Cancer* and *The Thing About Advanced Cancer* for Cancer Council NSW.

Julie is generously offering a private workshop for a half day to help you communicate and achieve positive outcomes. Ideal for a small group of four people or one-on-one.

- Private half day workshop for 4 people or one on-one
- To be taken at a mutually convenient time between April and December 2020.

www.juliemccrossin.com

Value: \$4,000



57. SERENA SANDERSON CATERING

Serena Sanderson Catering is known for her high standard of presentation and service as well as her passion for great, innovative food, which has made her one of Sydney's finest caterers. Serena Sanderson Catering is offering a catered cocktail party for up to 30 guests including one chef.

- **Serena Sanderson Catering will provide a catered cocktail party at a location of your choice in Sydney for up to 30 guests including 1 chef**
- **Valid to March 2021, subject to availability. Excludes public holidays and New Year's Eve.**

Value: \$1,450



58. MENTAL HEALTH FIRST AID FOR YOUR TEAM

Ralph Estherby, CEO for **Chaplaincy Australia** and an Army Chaplain, has extensive experience and insights into mental health awareness and welfare support for those facing the rigours of military service including those struggling with the effects of PTSD. With over 30 years' experience in Pastoral Care and Chaplaincy he brings broad insight and clarity around issues and strategies of assisting individuals struggling with their mental health. Ralph is generously offering a two-day course to equip your team with skills and give them confidence to assist friends, family and co-workers experiencing mental health problems.

- **A 2-day accredited Mental Health First Aid Course for up to 10 members of your team or organisation**
- **To be conducted at a mutually convenient time and location from April to December 2020.**

www.chaplaincyaustralia.com

Value: \$4,000





59. SMEG ECF01BLAU BLACK 50s RETRO STYLE ESPRESSO COFFEE MACHINE

When **Smeg's** espresso coffee machine won the 2017 GOOD DESIGN Award for excellence in design and innovation, it beat out more than 500 entries. It's not often you'll find a manual espresso machine with such a small footprint – this is one compact caffeinator.

With just three buttons before you – single shot, double shot, steam – getting your daily coffee fix is easier than ever. Use the adjustable steam wand to give your milk heat and aeration and, with the stainless steel filter basket, you'll feel the full autonomy of a barista.

This machine gives you plenty of opportunity to express.

Value: \$500



60. DE'LONGHI ECAM22110SB MAGNIFICA S COFFEE MACHINE

On the surface, it sounds like a fully automatic coffee machine signifies the surrender of control. What if we told you a **De'Longhi** fully automatic machine grants you even greater control over the profile of your coffee?

Whether you like a strong brew or something a bit milder, you can achieve the result you're looking for just by pressing the buttons or turning the knob on the electronic control panel. The guesswork of tamping your grounds is a non-issue. This machine can accommodate whole coffee beans or pre-ground coffee, and the consistency of the grind is completely up to you.

While this machine's espresso preparation is fully automatic, it comes equipped with a manual milk frother – ideal if you prefer a hotter cup of coffee. Maintaining your machine is simple – the brewing unit can be removed for cleaning, to ensure hygienic operation and optimum machine longevity.

Value: \$1,000





61. 'SYDNEY SAILING' BY NADA HERMAN

Nada grew up in the artistic **Herman** family, with famous grandfather Sali Herman and well-known artist father Ted Herman. During the 1990s all three generations painted in one studio at Avalon.

The unique painterly qualities of Nada's canvases create a sense of joy while capturing the energy and spontaneity of nature for the viewer. Nada Herman's Australian beachscapes, bushscapes, Sydney Harbour, Pittwater, nudes, marine life and floral paintings enjoy admiration from collectors in Australia and throughout the world. Her celebrated dynamic style of expressionism utilises rich vibrant colours, loads of oil paint, thick brushes and palette knives.

Nada Herman works from her studio on the family property atop of Avalon in Sydney, Australia.

- 'Sydney Sailing' – 100cm x 122cm – Oil on canvas.

Value: \$4,800



62. 'SUMMER LUNCH AT PITTWATER BEACH' BY JOAN BLOND

"I describe my art as abstract expressionist and I paint intuitively from experience in my everyday life and from memory. My work is heavily influenced by my beautiful rural surroundings, connection to the land and positive energy. My Summer Series painting appeared on The Block in 2018 and has continued to be a very popular choice for collectors. For me, my work is a journey, ever evolving with continuous growth. I am blessed to share my stories and to evoke emotion through each and every piece. My hope is that my work will trigger a memory or a personal experience for the viewer. I especially love my Summer Series paintings because they bring a room to life & each one is a real showstopper." - **Joan Blond**

- 'Summer Lunch at Pittwater Beach' – 153cm x 103cm – acrylic & oil and gold leaf
- Framed with a natural oak frame.

Value: \$3,900





63. 'WATERDROPS ON PEONIES, ELLA' BY HELENA McCONOCHIE

Helena McConochie's ambition is to show the viewer that a flower is more than just a flower. Margaret Olley said "Flowers can be appreciated by the viewer as just a flower, or can be explored deeper almost as a landscape. I place waterdrops on all my paintings to encourage people to conserve water." Helena's work is recognisable by the colours and the large scale, slightly cropped flowers. Annual exhibitions in Sydney, Canberra and international galleries, and many commissions keep Helena busy. "Flowers bloom in almost every colour of the spectrum and appeal not only to the visual sense, but to the olfactory too." Helena achieved distinctions at Diploma Level in a Fine Arts Course which included painting and drawing. Using a limited palette of just white and three prime colours allows Helena explore the beautiful world of creativity, with each colour on her palette unique.

- 'Waterdrops on Peonies, Ella' – 111 x 130cm – Oil on canvas.

Value: \$3,700



64. 'A WALK ON THE COAST' BY DALLAS LESLEY

Tidal patterns, rippled surface textures, stones worn by the ocean's currents, and crystalline glints of reflected light come together to form the works of the Opalescence series in vibrant turquoise and teal hues with earthy tones. Made with pearl pigments, layers of impasto, pieces of shell, glass and other pieces she finds washed up on the shoreline, these paintings engage our memory of the ocean and its palpable moments. Twice a Sulman Prize finalist in the Archibald, Wynne and Sulman Exhibition at the Art Gallery of NSW, Dallas' work has been valued and approved by the Australian Government for the Cultural Gifts Program. Her works are exhibited around Australia and internationally.

- 'A Walk on the Coast' – 91cm x 137cm – Mixed media on canvas.

www.dallaslesley.com

Value: \$5,800





65. 'NEVERMORE' BY TRISHA LAMBI

Trisha Lambi is an award-winning artist known for her bold and lavish oil paintings that have been exhibited widely in Australia and internationally. Highlights of her career include: the Guangzhou Art Fair in China, the 2012 Art Taipei International, 2012 London Olympics Art Show Zone Winner, 2017 Ventura California exhibition, 2018 Artbox Project New York Finalist, 2019 Art Lovers Prize, and her first Artist Residency in 2018 in Lakkos, Crete. This artwork is inspired by Edgar Allan Poe's *The Raven*.

- **'Nevermore' – 90cm x 120cm Limited Edition Print**
- **As Seen on The Block 2019 in El'ise & Matt's master bedroom**
- **100 signed and numbered edition with archival pigment inks on canvas**
- **Certificate of authenticity supplied**
- **Each print is reproduced using genuine Epson archival inks on professional grade poly-cotton.**

Value: \$1,100



66. 'FIGURE AT THE WINDOW' BY MEL BRIGG

Mel Brigg has forged a distinct and powerful artistic style that was influenced by human and geographic landscapes and the transitory connection between people and places.

Born in South Africa, Mel is self-taught and commenced his painting career in 1970. As well as having exhibited in England, Portugal and Singapore, he has had numerous solo and joint exhibitions in South Africa and Australia, and has been a finalist in the Moran National Portrait Prize. He is represented by galleries around Australia.

- **'Figure at the Window' – 53cm x 54cm – Oil on board.**

www.melbrigg.com

Value: \$6,750





67. 'SUNDAY SELECTION STUDY' BY SALLY WEST

Sally West has been painting for over 25 years and is predominantly an en plein air painter, painting on site in the landscape as she produces a direct response to her environment. She has been a winner and finalist in the Paddington, EMSLA, Manning, Cliftons and NSW Parliament Plein Air Painting art prizes amongst many others, and also works from her studio to produce still life works, street scenes and portraits.

- 'Sunday Selection Study' – 45cm x 45cm – Oil on canvas.

www.sallywestart.com

Value: \$1,350



68. ARTIST SURFDOG & ARTBIRD – 'ROAD TRIP'

'Road Trip' is the start of another great adventure with **Surfdog & Artbird**, in search of vibrant summer beach days on the Australian coast. Surfdog & Artbird are represented by galleries in Australia, and are collected by international clients. Their interest in Aussie beach culture and lifestyle is combined with their love of dogs, birds and all animals, and their paintings celebrate time together enjoying fun and adventures in the great outdoors. The paintings exude energy and happiness, and the quirky characters are a reflection of the light and playful nature of the artists. Guaranteed to bring a smile to your face, this museum quality archival Limited Art Edition from Surfdog & Artbird is printed by Fine Art Imaging and mounted and framed by Dave's Framing Balmain.

- Limited Art Edition – Image 50cm x 50cm plus mount and frame.

www.surfdog-art.com

Value: \$1,100



69. BEPPI'S DINING EXPERIENCE

Beppi Polese is considered the patriarch of Italian restaurants in Sydney and **Beppi's** restaurant is an institution. The restaurant in Sydney's Darlinghurst was established in 1956 by Beppi and his wife Norma and is still owned and run by the family. Beppi's restaurant is regarded as one of the most welcoming and hospitable Italian restaurants in Sydney with an unmatched tradition of providing exceptional food and service to four generations of Sydney diners.

- **\$500 dining voucher plus Beppi's 'A Life in Three Courses' book. Valid until March 2021.**

Value: \$535



70. SYDNEY RESTAURANT EXPERIENCE

- Located in Sydney's Historic Strand Arcade, **Pendolino** is one of Sydney's best Italian restaurants. Voucher for \$300 valid until 21 March 2021.
- **La Rosa The Strand** part of 'The Pendolino Group', is an elegant Italian wine bar and osteria located in Sydney's historic Strand Arcade. Voucher for \$150 valid until 21 March 2021.

Value: \$450



71. GLASS BRASSERIE AT HILTON SYDNEY

The Chef's Table at **glass brasserie** offers front row seats to an unparalleled dining experience. Take your seat at the stunning marble high top table and watch the chefs in action in the \$1.5 million state of the art kitchen. Guests will enjoy a seven course degustation menu, curated by restaurateur Luke Mangan and Head Chef, Peter Cassidy.

- **Chef's table experience with degustation menu for four**
- **Valid until 21 March 2022 and subject to availability.**

Value: \$600



72. TETSUYA'S

Tetsuya's restaurant is located in the centre of Sydney at 529 Kent Street. World-renowned chef Tetsuya Wakuda has created a serene dining enclave in the city, recognised by countless accolades and enduring respect from chefs across the globe. Tetsuya's serves a degustation menu. The degustation is unique, based on the Japanese philosophy of using natural seasonal flavours, enhanced by classic French technique and utilising the freshest possible ingredients.

- Degustation for 2 people with matching wines
- Valid until March 2021.

Value: \$750



73. THE FULLERTON HOTEL SYDNEY AFTERNOON TEA PARTY

Settle in for the afternoon beneath our impressive atrium bathed in sunlight. Enjoy our signature Afternoon Tea experience and tempt your taste buds with sweet and savoury options, as well as freshly baked scones and a choice of tea, and champagne.

- Afternoon Tea for 10 people including a glass of R de Ruinart champagne on arrival at The Fullerton Hotel Sydney daily from 12–6pm
- Valid from 21 March 2020 to 21 March 2021. Bookings must be made at least 24 hours in advance and subject to availability.

Value: \$780



74. LAITHWAITE'S

Enjoy a year's supply of world-class wines from some of Australia's top names, hand-delivered by the world's greatest wine delivery experts, **Laithwaite's Wine People**. Your first (of five) Euro Classic Reds cases includes a lavish Gold-medal Côtes-du-Rhône champion, silky-smooth Rioja from a top family estate, sumptuously dark and spicy Sicilian Nero d'Avola, and a rich Portuguese star with two Golds.

- Enjoy five cases – one every 3 months (and at Christmas)
- Hand-delivered to your home or office
- Exclusive, world-class wines – worth in total over \$1,200!
- Select all reds or mixed cases.

Value: \$1,200





75. THE ROYAL AND GLENMORE HOTELS

The Royal has been an inner west icon since 1886. The Royal Botanical bar, dining and terrace includes a Botanical Dining area overlooking the hustle and bustle of Norton Street. www.theroyalleichhardt.com.au

The Glenmore is a favourite among Sydneysiders, not only for its sun-drenched rooftop with sweeping 180-degree views of Sydney Harbour, and its colonial old English charm and character. www.theglenmore.com.au

- **The Royal Hotel Leichhardt – Lunch for 4 people on the Royal Botanical Balcony to the value of \$200**
- **The Glenmore Hotel – Lunch or dinner for 6 people in The Club room to the value of \$300**
- **Valid until of 31 December 2020.**

Value: \$500



76. SEABREEZE BEACH HOTEL IN SOUTH WEST ROCKS

South West Rocks is a quaint coastal town located halfway between Sydney and Brisbane that is well known for its relaxed atmosphere and pristine beaches. Overlooking iconic Horseshoe Bay, the Seabreeze Beach Hotel is the perfect place for you to experience the relaxed, welcoming and friendly atmosphere, seaside casual dining, live entertainment and of course, the views.

www.seabreezebeachhotel.com.au

- **3 nights accommodation in a family room at The Seabreeze Beach Hotel, with a \$50 bistro voucher**
- **Valid until of 31 December 2020.**

Value: \$500



77. ESTATE TUSCANY - HUNTER VALLEY

Ever dreamt of holidaying in Tuscany? Well, forget the passport, all you have to do is travel to the Hunter Valley to experience staying in a Tuscan retreat. Set on 26 acres, **Estate Tuscany** in the heart of wine country boasts the most superb views in the Hunter overlooking a valley of 300 acres of vineyards framed by the majestic backdrop of the Brokenback Mountains. The resort has 38 rooms, The Mill Restaurant and Brokenback Bar. Be treated to our warm friendly hospitality, fine food and wine.

- **1 night midweek accommodation in an Olive Grove Room including continental breakfast for 2 adults**
- **Valid 21 March to 12 September 2020. Subject to availability.**

Value: \$260



78. MURRAY STEWART - OLYMPIC GOLD MEDALIST

Murray Stewart is a multiple Australian Champion and National Team representative in Sprint Kayaking, placing 4th in the K1 1000m in Rio, and receiving a Gold Medal in the Men's K4 1000m at the London Olympic Games in 2012. Murray is currently preparing for his third Olympics in Japan 2020. If kayaking is your sport, this experience is a dream come true. **This item is tax deductible*

- A 2-hour personal training session with Murray Stewart for 4 people
- To be held at a mutually beneficial time, most likely on Narrabeen Lakes or Narrabeen oceanside between March 2020 and March 2021.

Value: Kayak with a Gold Medallist



79. SWIFTS NETBALL COACHING EXPERIENCE

Anita Keelan, NSW Swifts Assistant Coach and Performance Manager at QBE Swifts Academy, is well respected throughout Australian netball. Anita has played an influential role in the development of some of the country's finest young talent including the 2019 Suncorp Super Netball Champions. Anita will take a netball team for a one hour skill session.

- Netball Australia's High Performance Coach
- 1 hour skills coaching session with Anita Keelan
- Any age group or level
- To be taken at a mutually agreeable time between March and August 2020 in Sydney.

**This item is tax deductible*

Value: Hone your netball skills



80. TOUR FAMOUS MANLY WITH A LOCAL

Manly local tours is delighted to donate a half day private history tour of either Manly Village or North Head National Park. Your guide will be a friendly local character who will introduce you to secret spots and information unfamiliar to tourists, passed down through generations of local residents. We guarantee a memorable, fun day which will include coffee and a light snack at a favourite local spot.

- Great present for a non-local or overseas visitor
- Voucher available up to 4 people
- The tour will be tailored to guests' physical ability
- Valid March 2020 to March 2021.

Value: \$440





81. RUTH TATE

Ruth Tate is an Australian label grown from a love of beautiful textiles and timeless fashion with a focus on natural fibres. The clothing features chic, classic silhouettes with a twist made in beautiful fabrics. We understand that quality and fit are important in choosing the style that makes you feel fabulous. Clothing is designed and individually made with fabrics sourced from across the world using Australian quality craftsmen for production. Chic, beautiful and ethical clothing.

- \$500 gift voucher
- Valid until March 2021.

www.ruthtate.com.au

Value: \$500

RUTH TATE
SYDNEY



82. SUNSHADES EYEWEAR - SAINT LAURENT CLASSIC SL11

Founded in 1961, **Saint Laurent** is one of the most prominent fashion houses of the 20th century. Originally a House of Haute Couture, Yves Saint Laurent revolutionised modern fashion in 1966 with the introduction of luxury ready-to-wear.

The SL11 Classic Saint Laurent Aviator Sunglasses features a double nose bridge, mineral glass lenses, and a Saint Laurent signature engraved steel temple and bridge.

Value: \$505

SUNSHADES
EYEWEAR



83. SUNSHADES EYEWEAR - SAINT LAURENT SL101K

Founded in 1961, **Saint Laurent** is one of the most prominent fashion houses of the 20th century. Originally a House of Haute Couture, Yves Saint Laurent revolutionised modern fashion in 1966 with the introduction of luxury ready-to-wear.

The Saint Laurent SL 101/K is a round full-rimmed frame with a twist of oval. Crafted from premium acetate, it features a saddle bridge and sleek arms with the brand name on the inside.

Value: \$665

SUNSHADES
EYEWEAR

84. PEAK PERFORMANCE

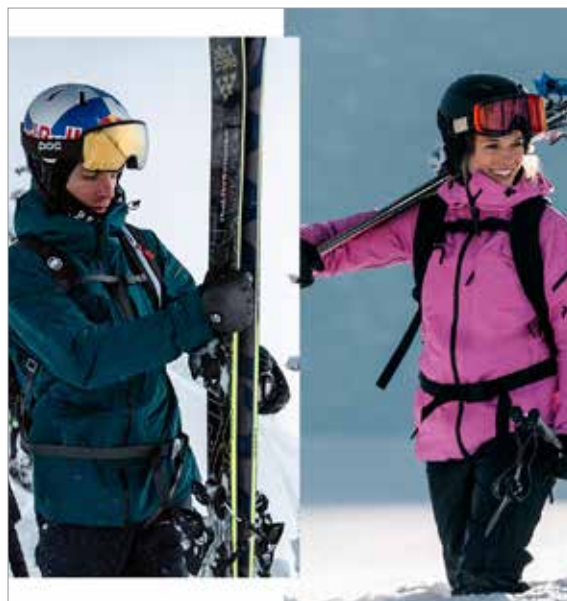
Three decades since our start, we've found ourselves expanding into a number of activities. By taking our know-how of functionality and quality and seamlessly fusing it with modern design, we create clothing for everyday use in the urban environment. In the end it's all about freedom. Being able to make the most out of every opportunity, knowing that we're always prepared for anything. From slopes to streets, from bike to bar, from work to workout – this is **Peak Performance**.

snowsport.com.au

● **\$1,000 gift voucher for Peak Performance.**

Value: \$1,000

PeakPerformance®  SNOWSPORT



85. EMBELLISH® ATELIER - A MILLINERY WORKSHOP FOR 4

Create your own millinery masterpiece in the **Embellish® Atelier** French inspired studio in Balmain – a workshop for up to four people creating a fascinator each. Catherine Kelly will help you create a wonderful, original headpiece using traditional techniques, sinamay and trims. A glass of bubbly and light lunch is included. Catherine's designs are timeless and bespoke pieces will add glamour and elegance to any occasion.

- **A millinery workshop for 4 people**
- **Valid until March 2020 at a mutually convenient time. Not available in September to 5 November 2019 (Melbourne Cup).**

Value: \$1,000

Embellish
ATELIER



86. BVLGARI SERPENTI FOREVER BRACELET

Serpenti Forever multi-coiled rigid Cleopatra bracelet in multicoloured metallic karung skin, with brass light gold plated hardware. Iconic double snakehead décor in black and glitter silver enamel, with black enamel eyes.

Value: \$680

BVLGARI





87. AXEL MANO HAT

Sydney hat designers '**axel mano**, are well known for creating the hats you have to have.

All their hats are hand blocked and hand made in Sydney.

Here's the chance to own a beautiful 'axel mano, hat.

Value: \$450



88. INDULGE AND BE PAMPERED AT KARPATI SKIN CLINIC

Treat your skin to some TLC at **Karpati Skin Clinic**. Focusing on your individual skin requirements to attain the best results, naturally, our expert therapists led by Eva Karpati will pamper you with luxury Signature and Clinical Non-Surgical face and body treatments for all over rejuvenation and relaxation.

Value: \$500

KARPATI
SKIN CLINIC



89. MILLER & GREEN HAIRDRESSING HAIR CARE BUNDLE

Winners of the most outstanding hairdresser on the North Shore, **Miller & Green** is a boutique hair salon in McMahons Point. Pamper yourself with this luxurious hair care bundle from Miller & Green which includes eight full size salon products by Evo and Wella, an ionic paddle brush from Evo and a \$200 voucher to use in salon.

● **Miller & Green hair care bundle \$500 inclusive of voucher for \$200.**

Value: \$500

90. S.PELLEGRINO & ACQUA PANNA

Enjoy your favourite mineral waters all year round with six cases of **S.Pellegrino** Sparkling Mineral Water and six cases of **Acqua Panna** Still Mineral water.

The two brands of water are widely appreciated for their ability to combine perfectly in enhancing foods, wines and refined tastes through their properties: Acqua Panna is smooth, light and velvety, while S.Pellegrino is bright, fizzy and refined.

- 6 cases of S.Pellegrino Sparkling Mineral Water Glass 1L and 6 cases of Acqua Panna Still Mineral Water Glass 1L.



91. ROBAND MILKSHAKE MAKER

Roband commercial milk shake mixers are the ideal machines for making perfect thickshakes or milkshakes every time. The Saturn beater produces extra fluffy shakes using minimal ingredients time after time. Merging styling, power, and performance these mixers are a must for cafes and fast food outlets.

Value: \$412



92. TWO RIVERS WINES

Since 1988 **Two Rivers** has specialised in making quality wines from premium grape varieties. Under the watchful eye of award winning viticulturist Brett Keeping and his wife Linda, Two Rivers is now among the premier vineyards of the Hunter Valley.

- Mixed case of premium wines.

Value: \$250





93. AUSTRALIAN NATIONAL MARITIME MUSEUM EXPERIENCE

The **Australian National Maritime Museum** is Australia's national centre for maritime collections, exhibitions, research and archaeology in both urban and regional areas of Australia. The museum presents a changing program of stimulating exhibitions and events to share Australia's maritime history and connect the stories, objects, people and places that are part of our country's narrative.

- 2 family passes and 2 single tickets
- Private tour of 1934 wooden fishing boat KRAIT
- Valid until 20 October 2020.

www.sea.museum

Value: \$220



94. BYRON BAY COOKIE HAMPERS

From café cookies to collectable gift tins, **Byron Bay Cookies** truly deliver a taste of Byron in every bite. Filled with a selection of products from their beautiful gift range, these Luxe hampers are the ultimate indulgence for all cookie lovers.

- 2 Luxe cookie hampers.

Value: \$200



95. CHOCOLATE INDULGENCE – LINDT

A chance to enter chocolate heaven is yours with this wonderful hamper with the very best Swiss chocolate from **Lindt & Sprungli**!

- A delectable chocolate hamper.

Value: Chocolate heaven!

96. THE PICTURE OF DORIAN GRAY

Oscar Wilde's century-old moral fable, packed with witticisms, is as devilishly wicked today as on its debut. This new interpretation of Wilde's only novel is adapted and directed by Artistic Director Kip Williams. Williams' reimagining will see Eryn Jean Norvill performing every role in the story while inventive use of live video will capture and amplify every move.

- 2 tickets to *The Picture of Dorian Gray* on Friday 24 July 2020 at Roslyn Packer Theatre.

SYDNEY
THEATRE
CO



97. SYDNEY DANCE COMPANY

In 2020, **Sydney Dance Company** will explode the everyday and take you into the sublime. *Bonachela / Forsythe* collects three works from across the spectrum of physicality. *Impermanence* sees Artistic Director Rafael Bonachela join forces with Bryce Dessner of iconic American rock band The National who will compose a world premiere score, to be performed live on stage by the Australian String Quartet.

- 2 tickets to Chair's Evening performance during *Season One: Bonachela / Forsythe* at Roslyn Packer Theatre, Walsh Bay. Choose from Thursday 26 March or Thursday 2 April 2020.

SYDNEY
DANCE
COMPANY



98. LA TRAVIATA ON SYDNEY HARBOUR

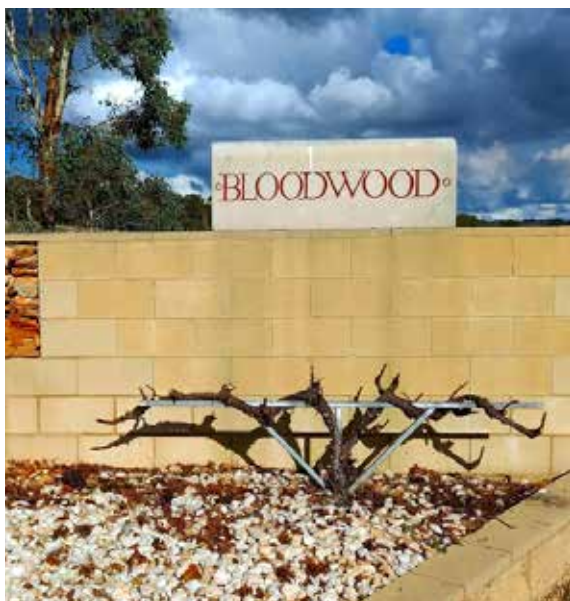
Experience the joy and heartache of the world's most popular opera at Sydney's best night out. In 2020, **Opera Australia** presents *La Traviata*: the story that inspired Moulin Rouge. Arrive early to enjoy drinks or dinner, and drink in the view as the setting sun glimmers over the city skyline. Then take your seats in the comfortable grandstand to enjoy "a ravishing visual spectacle" (Huffington Post).

- 2 Premium tickets to *La Traviata* on Sydney Harbour
- Available 28 March to 26 April 2020.

Value: \$670

O|PERA AUSTRALIA





99. BLOODWOOD WINES

Bloodwood owners Rhonda and Stephen Doyle planted the pioneering wine grape vineyard in the Spring of 1983. Over the last three decades, they have cared for and nurtured those original vines on their Griffin Road property in Orange. Today, in their maturity, they offer the best potential for the production of the highest quality, cool climate fruit which is the enduring foundation of all Bloodwood wine styles. The grapes for our infamous BMIT are sourced from the gravelly mid slopes of the original 1983 Blend Block planting at Bloodwood. BMIT is made from whole-bunch-pressed Malbec.

- 1 Dozen bottles of 2018 Big Men in Tights.

Value: Big Men in Tights will be talking at your next function



100. CORBAN & BLAIR WALL OF FRAMES

Corban & Blair create originality, value and meaning in the bespoke marketing, presentation and gift products they design and manufacture. Solutions showcase our Australian cultural uniqueness, minimise their effect on the environment and communicate authentic stories. They always aim to inspire customers with novel solutions. This stylish frame wall is made in New Zealand from plantation timber and it carbon neutral. It will look great on walls at home or in the office. www.corbanblair.com.au

- Corban & Blair Shadow Box frame wall. Choose black or white. Includes two x 10x8", two x 6x4" and one each 5x7" and 8x8" frames.



Corban & Blair
www.corbanblair.com.au

Value: \$220



101. DINOSAUR DESIGNS

Louise Olsen and Stephen Ormandy started **Dinosaur Designs** when they were at art school more than 30 year ago. They have created a mini art movement synonymous with luxury, creating handmade environmentally friendly homewares, objects and jewellery. Each piece is one of a kind, characterised by warmth and tactility, only possible by making each piece by hand in resin and precious metals in their Sydney studio.

- Dinosaur Designs gift voucher for \$250.

Value: \$250



102. DINE AT ORMEGGIO AT THE SPIT SYDNEY

Ormeccio at The Spit, located at D'Albora Marinas, offers contemporary Italian cuisine in a spectacular waterside setting overlooking Middle Harbour and Pearl Bay. It has two Hats in Fairfax's national Good Food Guide 2019 and has been a Hatted restaurant since opening in 2009. Executive Chef Alessandro Pavoni and his team utilise both new and traditional techniques of cooking, along with the finest produce, to deliver the Ormeccio Experience.

- 5 course 'Little Trip Through Italy' degustation for 4 people (wine not included)
- Valid until September 2020 and subject to availability.

Value: \$540

ORMEGGIO
AT THE SPIT



103. BATHERS' PAVILLION

Set on Sydney's Balmoral Beach overlooking Middle Harbour, the much-loved **Bathers' Pavilion** combines beachside elegance with a 1920s art deco soul and Mediterranean charm.

Owners Serge Dansereau and Ian Pagent deliver the best of Australian coastal dining, from beach snacks through to fine dining, across a variety of different spaces within the grand heritage building. All with spectacular views over Balmoral Beach.

- \$250 dining voucher valid until March 2021.

Value: \$250

BATHERS'
PAVILLION



104. YOGA AND MEDITATION AT THE OFFICE

More than before businesses are beginning to understand that the health and wellness of their workforce depend on more than just building a culture of teamwork. The workforce needs to be nourished from within, and yoga and meditation classes can help create a healthy productive workforce.

Take A Moment offers on-site professional yoga & meditation sessions at your corporate office.

www.takeamoment.net.au

- 3 Corporate meditation or yoga sessions (45 minutes) onsite at your Sydney office.

Value: \$699

 TAKEAMOMENT.NET.AU





105. SAMSONITE LUGGAGE

Founded in 1910, **Samsonite** is the world's leading luggage brand with an extensive legacy in trendsetting travel solutions. Samsonite offers an extensive range of travel, business, kids, casual and personal accessory products. It helps travellers journey further, with ever-lighter and stronger products.

- 1 Samsonite Orfeo 55cm Spinner
- 1 Samsonite Orfeo 75cm Spinner
- Features: 4 double spinner wheels, TSA combination lock, functional interior with cross ribbons zipper divider, warranty: 10 years.

Value: \$760

Samsonite



106. CAROLINA LIFESTYLE

Carolina, a lifestyle label made with love, offering lifestyle clothing and accessories versatile in function and good quality.

Since its humble beginnings, Carolina has emerged as a successful lifestyle label in Australia, offering a large range of leather accessories, shoes, homewares, hats, giftware, knitwear and clothing.

- A Carolina gift voucher for \$250 valid until 21 March 2021.

Value: \$250

carolina



107. RIEDEL WHISKY SET

The decorated, machine-made whisky set of the stylish, yet subtly nostalgic glass collection **RIEDEL Barware** is inspired by the glamorous Art Nouveau period and presents a contrast to Riedel's purist, unadorned wine glasses. Two 'Louis' tumblers were created as part of the Riedel Design Awards 2017 in Venice, when Kyle Solá won the Riedel Young Designer Competition with his innovative design. RIEDEL's Barware tumbler collection presents perfect, 'must have' glasses for all cocktail and spirits lovers. All RIEDEL glasses are dishwasher safe.

- 2 RIEDEL Bar Tumbler Louis Whisky and 1 Louis Whisky Carafe.

Value: \$240

108. IPSUM BEST SKIN SPA HAMPER

Created and produced in Australia, **Ipsum** Best Skin Face Oils and Body Oils are highest quality certified organic native plant oil blends, delicately balanced to achieve your best and most radiant skin. The luxury formulations feature only sustainably sourced oils, carefully extracted from plants to ensure the integrity of the powerful benefits to skin. The Ipsum Best Skin Spa features a rose quartz roller to gently massage and enhance delivery of the Face Oils plus a dry body brush to boost circulation and advance the benefits of the quick-absorbing Body Oils. Included is seasonal wellness book *Lemons are a Girl's Best Friend* by Ipsum creator, Janet Hayward.

Value: \$250

Ipsum



109. SHELTA PADUA

Padua is part of Shelta's Terrazzo Delux Range, simply the finest timber umbrellas available. Terrazzo Delux frames are manufactured from FSC certified hardwood. The natural beauty of the timber is enhanced by a protective clear lacquer. The Padua features clean and durable stainless steel hardware, including rib ends, spiders, lower pole sleeves and pulley systems. The canopy is a tough Sunbrella Acrylic canvas.

● 1 Shelta Padua 300cm Octagonal Market Umbrella.

Value: \$1,040



110. NSW BLUES 2017/2018 SIGNED CRICKET BAT AND SHIRT

The **NSW Blues** represent NSW in the Sheffield Shield and the domestic One-Day cup competitions. This limited edition cricket bat and shirt has been signed by members of the 2017/2018 Sheffield Shield team, including current Australian players Steve Smith, David Warner, Pat Cummins, Mitchell Starc, Josh Hazlewood and Nathan Lyon.

● For the cricket fans, an official autographed Team Bat 2017/18 and signed shirt.

Generously donated by Toyota.





BIDDING INSTRUCTIONS

All auction items are 100% donated

Guests are invited to use their personal phone or tablet to view the auction items and place bids. Online bidding will open on Thursday 5 March 2020.

- Visit www.galabid.com/posh to view the auction items and register online, or
- To register via SMS, text posh followed by your name to 0458 678 678, e.g. posh John Smith.

Items will be sold to the highest bidder recorded at the close of bidding. The highest bidder will be acknowledged on the screens in the ballroom. Once you have made payment, you'll be given a receipt and then offered the gift certificate or item you have purchased.

Cancer Council NSW has endeavoured to catalogue and describe the property correctly. All property is sold as is, and Cancer Council NSW neither warrants nor represents, and shall in no event be responsible for, the correctness of description, genuineness or condition of the property. No statement contained in the catalogue or made orally at the sale or elsewhere shall be deemed to be assumption of liability.

Auction items that display an * in the POSH catalogue are tax deductible. Notwithstanding any of the Rules and Conditions, as listed on these pages, the operation of the auction remains at the discretion of Cancer Council NSW. All sales are final and there will be no exchange or refund on items.

Items may be removed only by exhibiting a 'paid' receipt and all auction items and services must be used within the specified validity. Reservations for all trips, parties and/or similar events must be mutually arranged.

Please note that some of the travel packages have been designed to be taken at the time specified in the description. Taxes, travel insurance and visas are the responsibility of the purchaser. No auction item may be redeemed for cash.

Cancer Council NSW shall not be liable for any loss or damage whatsoever suffered (including but not limited to direct or consequential loss) or personal injury suffered or sustained in connection with the auction items, except for any liability which cannot be excluded by law.



Cancer Council research grants recipients 2019

FRIENDS

In the last five years alone, Cancer Council NSW has contributed \$83.6 million to essential cancer research. This is only possible thanks to the generosity of our supporters.

Please consider joining our Friends of POSH by making a tax-deductible donation to cancer research. You can specify the area of cancer research where you wish your donation to be directed.

Thank you for your generous support.

Jeff Mitchell
Chief Executive Officer
Cancer Council NSW



FRIENDS TAX-DEDUCTIBLE DONATION

I wish to donate the following amount to cancer research (please tick ✓)

Titanium	\$50,000	<input type="checkbox"/>
Diamond	\$20,000	<input type="checkbox"/>
Platinum	\$10,000	<input type="checkbox"/>
Gold	\$5,000	<input type="checkbox"/>
Silver	\$2,500	<input type="checkbox"/>
Bronze	\$1,000	<input type="checkbox"/>
Other	\$	<input type="checkbox"/>

Please direct my donation to the following area of cancer research (please tick ✓)

- Wherever Cancer Council believes the need to be greatest ☐
- Bowel ☐
- Brain ☐
- Breast ☐
- Childhood cancer ☐
- Cervical cancer ☐
- Leukaemia and Lymphoma ☐
- Liver ☐
- Ovarian ☐
- Pancreatic ☐
- Prostate ☐
- Skin ☐
- Other (please specify) ☐

Name:

Address:

Phone:

Email:

Receipt Name:

Please debit my credit card: Visa / MasterCard / Amex (circle one)

Card No:

Expiry Date: /

A tax-deductible receipt will be posted to you.

Signature:

Name on card:

FOR FURTHER DETAILS PLEASE CONTACT:

Jenny Menzies, Cancer Council NSW
PO Box 572, Kings Cross NSW 1340
Ph: 9334 1967 or email: jennym@nswcc.org.au



*free
guide*
to including
a gift in
your will

leave hope in your will for a cancer free future

A **gift in your will** can provide practical support to cancer patients and their families, and fund vital cancer research.

Get your FREE guide to including a gift in your will. Find out what has inspired others to do the same, how your gift helps to create a cancer free future, as well as correct wording for your solicitor.

Help create a cancer free future to protect those you love.

Visit **cancercouncil.com.au/bequests** or call for a confidential conversation with Gifts in Wills Manager, Jasmine Hooper on **02 9334 1479**

POSH COMMITTEE

— 21 YEARS —

As we reflect on 21 years of the POSH Gala Ball we gratefully acknowledge the contributions made by the past committee members. Thank you for your generosity of spirit.

POSH COMMITTEE

Michael Morgan

2003 – 2020 (18 years)

Chair 2019 –

Michele Brooks

2011 – 2019 (9 years)

Bill Drakopoulos

2011 – 2020 (10 years)

Luke Fussell

2019 – 2020 (2 years)

Gary Gerstle

2000 – 2020 (21 years)

Chair 2000 – 2009

Bruce Hodgkinson AM SC

2006 – 2020 (15 years)

Nadine O'Brien

2006 – 2020 (15 years)

Chair 2016 – 2018

Clare Paspaley

2016 – 2020 (5 years)

Stephen Roberts

2005 – 2020 (16 years)

Chair 2010 – 2015

Kelly Ross

2018 – 2020 (3 years)

Brad Sweeny

2018 – 2020 (3 years)

James Tuite

2000 – 2020 (21 years)

John White

2012 – 2020 (9 years)

John Ryder Winning

2016 – 2020 (5 years)

John Winning AM

2000 – 2020 (21 years)

Donna Smith

2011 – 2013 (3 years)

Gayee McGrath

2012

Taine Moufarrige

2002 – 2010 (9 years)

Philip Garling

2006 – 2007 (2 years)

Richard Stuble

2003 – 2005 (3 years)

Mary Phibbs

2005

Debbie Harrison

2000 – 2005 (6 years)

Susan Andrews

2002 – 2003 (2 years)

Deborah Page

2000 – 2003 (4 years)

Sue D'Apice

2001 – 2002 (2 years)

Peter Capp

2000 – 2002 (3 years)

Graham Hannan

2000

Penelope Dobson

2000

Phillip Tarrant

2020 (1 year)

Libby Boyce

2020 (1 year)

CANCER COUNCIL CHIEF EXECUTIVE OFFICERS

Jeff Mitchell Ex-officio

2017 – 2020 (4 years)

Jim L'Estrange Ex-officio

2014 – 2016 (3 years)

Regina Sutton Ex-officio

2013

Andrew Penman AM Ex-officio

2000 – 2012 (13 years)

POSH VOLUNTEERS

Jane Bennett

2000 – 2020 (21 years)

Dallas Bromley

2000 – 2020 (21 years)

MASTER OF CEREMONIES

Vince Sorrenti

2000 – 2020 (21 years)

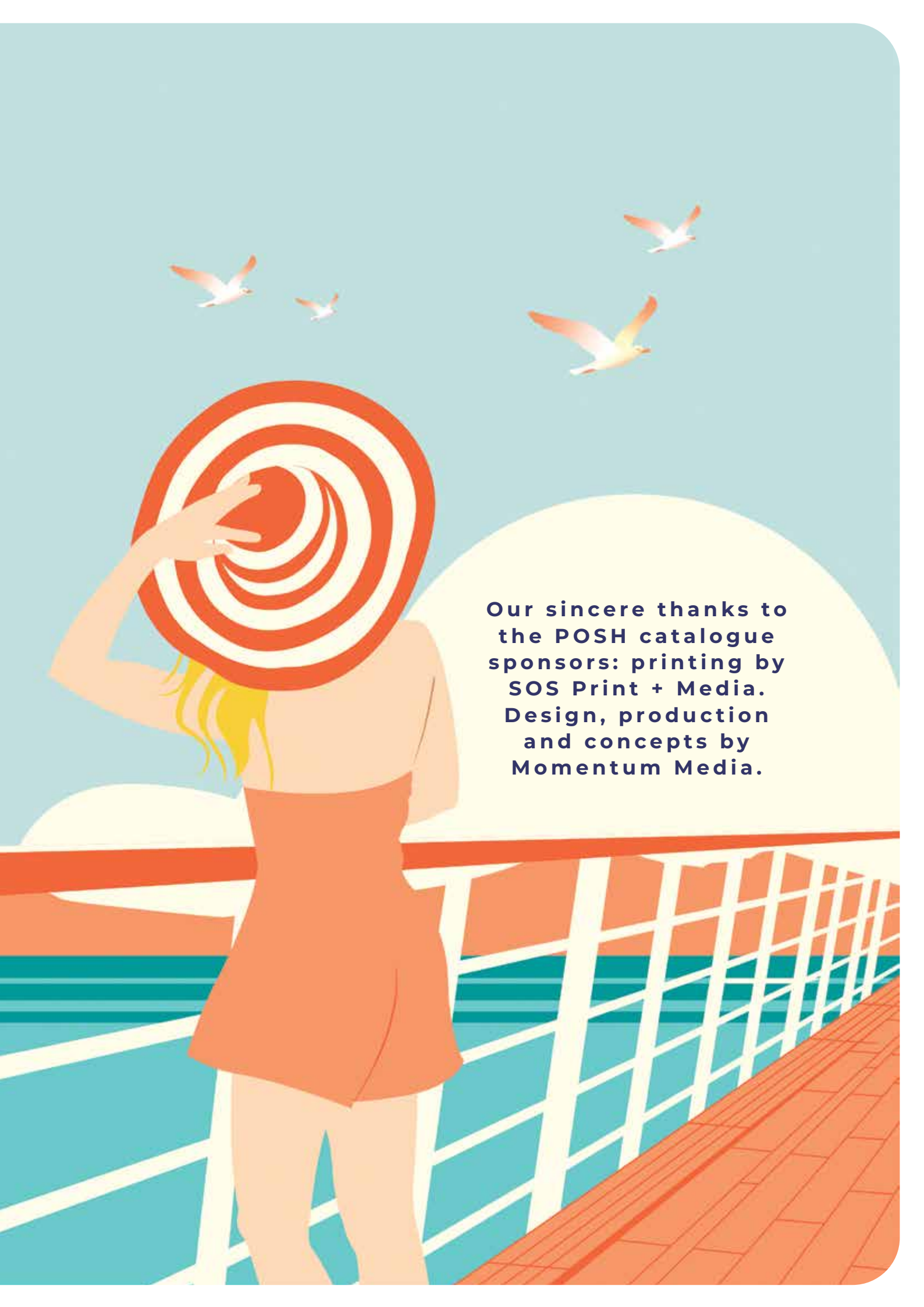


THANK YOU

FOR YOUR SUPPORT
OF POSH 2020

Cancer Council NSW
153 Dowling St, Woolloomooloo
NSW 2011

Jenny Menzies
9334 1967
jennym@nswcc.org.au

An illustration of a woman with blonde hair, seen from behind, wearing an orange strapless dress. She is holding a large hat with a red and white spiral pattern over her head. She stands on a ship's deck with a white railing, looking out at a blue sea under a light blue sky. Several white birds are flying in the sky. A large, pale yellow sun is partially visible behind the railing.

**Our sincere thanks to
the POSH catalogue
sponsors: printing by
SOS Print + Media.
Design, production
and concepts by
Momentum Media.**

